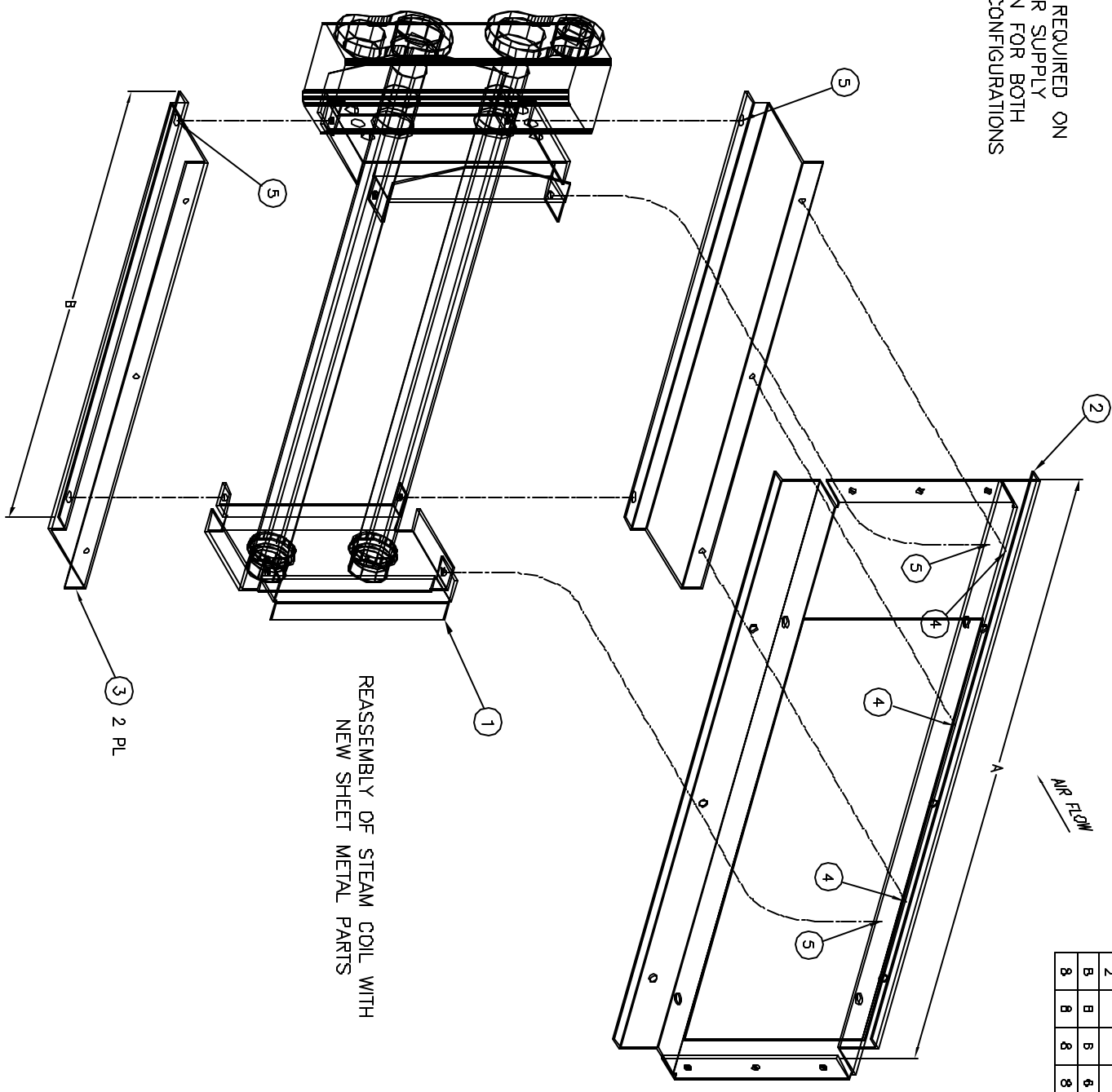
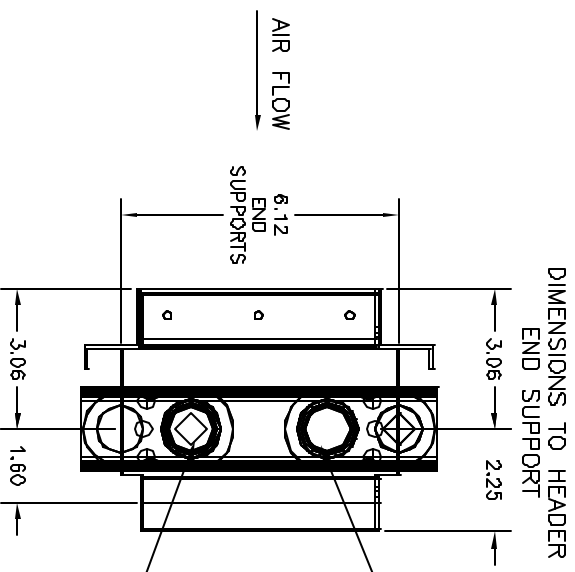


EXT	UNIT/CFM	A	B
-01	200,300	19.18	14.00
-02	400	24.18	19.00
-03	600	33.68	29.00
-04	800	42.18	37.00
-05	1000,1200	61.18	56.00



ECN	FC128B	B
12-9-99	K. DANIELS	
ECN	FC128B1	A
11-9-99	K. DANIELS	

STD
ECN FC160

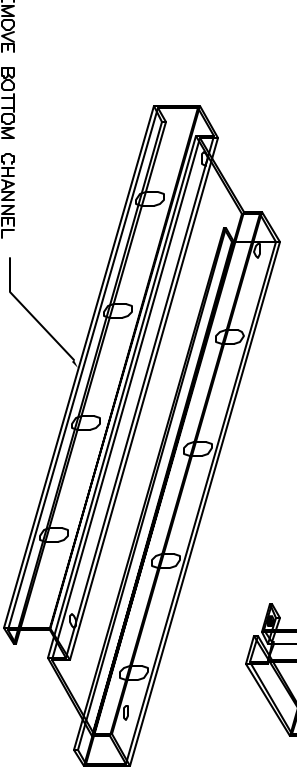
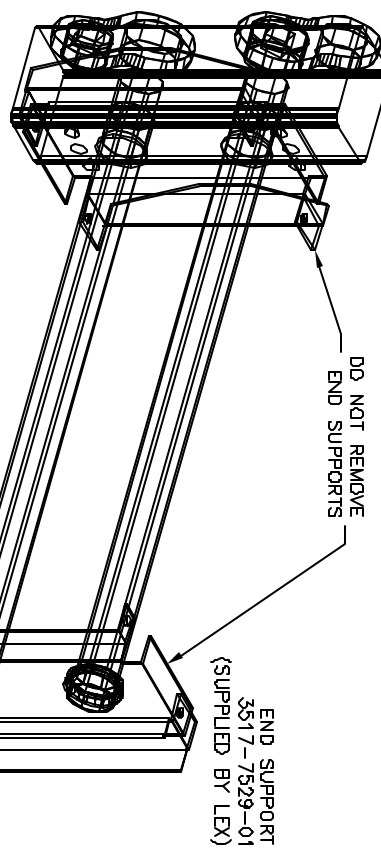
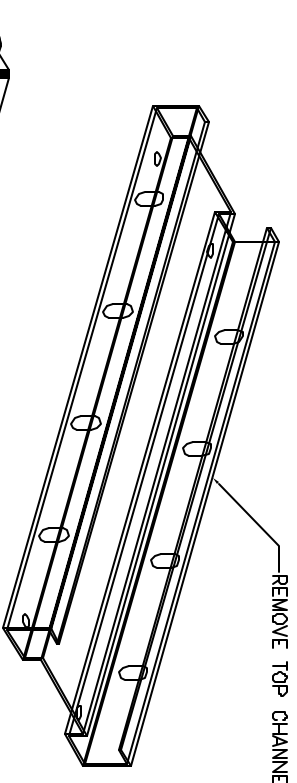
IP UNITS TOLERANCE TRANE STD E31102002
UNLESS OTHERWISE SPECIFIED
FINISH
X XX ± ± ±
ANGLES ± ± ± ±
HOLE DIA ± ± ±
CONFORMS TO ASME Y14.5M-1994.

AUTOCAD DD INT SCALE
PRINT MITTERRETER
DRAWN BY: J. DANIELS
DATE: 10-3-97
SYNOPSIS TO

TRANE COMPANY
A DIVISION OF AMERICAN STANDARD INC.
THIS DRAWING IS PROPRIETARY AND SHALL NOT BE REPRODUCED OR TRANSMITTED IN ANY FORM OR BY ANY MEANS WITHOUT THE WRITTEN CONSENT OF THE TRANE COMPANY.
THIRD ANGLE PROJECTION MATERIAL

3517-8346
ASSEMBLY
STEAM COIL
FORCE FLO
LH PIPING

EXT	QTY	REV	DESC	EXT	QTY	REV	DESC	EXT	QTY	REV	DESC	EXT	QTY	REV	DESC
	1		STEAM COIL, 200 & 300 CFM, 6"NS X 14", LH		1										
	1		STEAM COIL, 400 CFM, 6"NS X 19", LH		1										
	1		STEAM COIL, 600 CFM, 6"NS X 28", LH		1										
	1		STEAM COIL, 800 CFM, 6"NS X 37", LH		1										
	1		STEAM COIL, 1000 & 1200 CFM, 6"NS X 56", LH		1										
	1		PANEL: FRONT MOUNTING, STEAM COIL, 200 & 300 CFM		1										
	1		PANEL: FRONT MOUNTING, STEAM COIL, 400 CFM		1										
	1		PANEL: FRONT MOUNTING, STEAM COIL, 600 CFM		1										
	2		PANEL: FRONT MOUNTING, STEAM COIL, 800 CFM		2										
	1		PANEL: FRONT MOUNTING, STEAM COIL, 1000 & 1200 CFM		1										
	2		PANEL: TOP & BOTTOM MOUNTING, STEAM COIL, 200 & 300 CFM		2										
	2		PANEL: TOP & BOTTOM MOUNTING, STEAM COIL, 400 CFM		2										
	2		PANEL: TOP & BOTTOM MOUNTING, STEAM COIL, 600 CFM		2										
	2		PANEL: TOP & BOTTOM MOUNTING, STEAM COIL, 800 CFM		2										
	4		PANEL: TOP & BOTTOM MOUNTING, STEAM COIL, 1000 & 1200 CFM		4										
	4		SCREW: #10-18 X .575 SHT MTL		4										
	5		SCREW: 1/4-20 X .500 SHT MTL		5										



REMOVE TOP CHANNEL

DD NPT REMOVE
END SUPPORTS
(SUPPLIED BY LEX)

REMOVE BOTTOM CHANNEL

DISASSEMBLY OF LEXINGTON
STEAM COIL
LH SHOWN