



**TRANE®**

For 208v units, must use kit for 200v chillers.

## General Service Bulletin

---

# Selection Of Parts To Replace MOD00275

Order Number: **PART-SVB19A-EN**

DATE: March 22, 2008

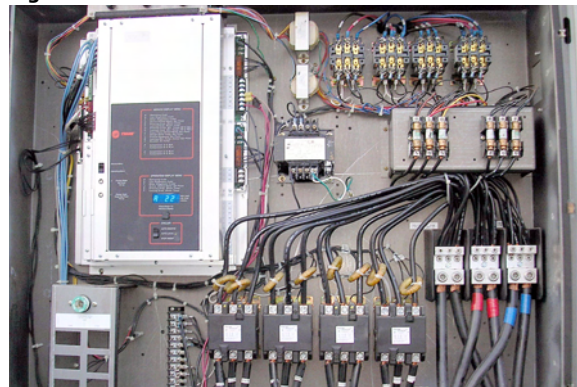
### Literature change history

PART-SVB19A-EN (March 2008) bulletin first release.

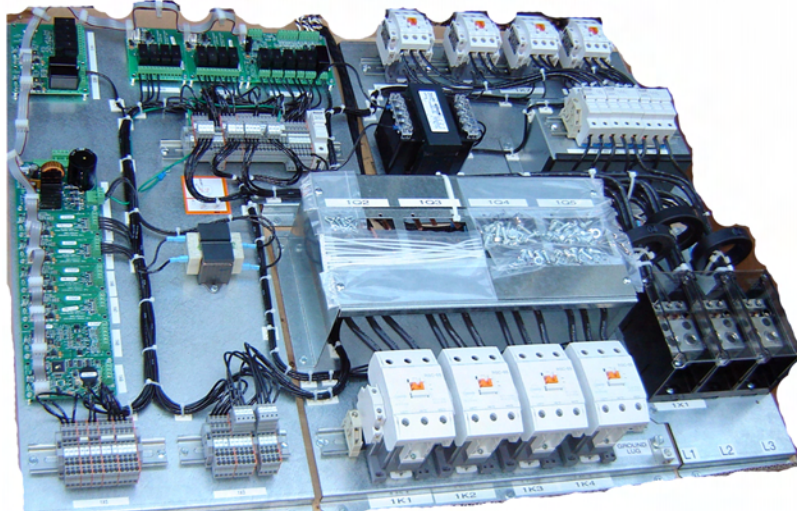
### Introduction

The purpose of this bulletin is to advise customers of the parts required to substitute Tracer™ CH530 chiller controller components for the control originally used in CGAD, CGAE, CGWD, CGWE and CCAD units. The control named Cyclone or MOD00275 will be phased out and the parts mentioned below will be the most up-to-date and cost effective substitutes.

**Figure 1. MOD00275 installed in a 60 ton air cooled unit**



**Figure 2. Air cooled 60 ton control panel sections with CH350 components**



**Figure 3. Water cooled 30 ton control panel with CH530 components**



## Discussion

The part numbers listed below consist of the new control panels and installation kits. Note that both a control panel and an installation kit are required for each unit upgrade. Existing unit type, voltage, tonnage and whether the unit is a high condenser temperature for water cooled units will be required to make the selection. A flow switch will be required to prove flow through the evaporator and must be installed if it doesn't already exist. Reference the unit parts list for the recommended flow switch.

Benefits of the Tracer™ CH530 chiller controller components include:

- All new panel components
- Improved performance, serviceability and reliability
- Expanded interoperability with building automation systems (ex COM 5)

Depending on the unit type, the control panel will ship in one of two configurations.

- Water cooled units will have a completely new control panel and components including enclosure and doors. See Figure 3.
- Air cooled units reuse the existing unit control panel enclosure. New components are assembled to three back panels to upgrade the existing control panel as shown in Figure 2 (p. 2).

The required installation kits consist of the various sensors, transducers, global connectors, etc. to wire to the new control panel. A COM3 board is supplied with all new panels.

The ship with literature for the KIT is file number PART-SVN107A-EN, or the latest version of this manual.

## Parts ordering information

Obtain the required parts from the local Trane Parts Center. If the specific part number can not be determined, contact the local Trane Parts Center with the unit model number or serial number.

Select a CH530 control panel and installation kit based on the existing unit type, voltage and tonnage per the following tables. Be sure to order the new control panel and the kit. Both items are required.

*Note: Be very careful to use the table which applies to the unit involved. Using the wrong table will result in the wrong parts being ordered.*

Other parts to consider ordering for specific application options:

- MOD01683 where COM5 is required.
- COI00993 if the machine has hot gas bypass. This is the solenoid valve coil that will need to be changed.
- KIT15059 if a water cooled machine requires condenser temperature sensing. This includes the sensors, cable and wells.
- Required - Flow switch for the chilled water loop. Consult unit parts list.
- When a new Disconnect switch is required refer to the unit parts list. The new panels ship only with terminal blocks.

**Table 1. CGA units, air cooled**

CGA unit tons	Voltage	New control panel part #	New panel model #	Required installation kit
20	200/60/3	CPN02749	RPAA020FOA0	KIT14971
20	230/60/3	CPN02629	RPAA020EOA0	KIT14971
20	460/60/3	CPN02630	RPAA02040A0	KIT14971
20	575/60/3	CPN02631	RPAA02050A0	KIT14971
20	380/50/3	CPN02632	RPAA02090A0	KIT14971
20	415/50/3	CPN02633	RPAA020D0A0	KIT14971

**Table 1. CGA units, air cooled**

CGA unit tons	Voltage	New control panel part #	New panel model #	Required installation kit
25	200/60/3	CPN02750	RPAA025F0A0	KIT14971
25	230/60/3	CPN02634	RPAA025E0A0	KIT14971
25	460/60/3	CPN02635	RPAA02540A0	KIT14971
25	575/60/3	CPN02636	RPAA02550A0	KIT14971
25	380/50/3	CPN02637	RPAA02590A0	KIT14971
25	415/50/3	CPN02638	RPAA025D0A0	KIT14971
30	200/60/3	CPN02751	RPAA030F0A0	KIT14971
30	230/60/3	CPN02639	RPAA030E0A0	KIT14971
30	460/60/3	CPN02640	RPAA03040A0	KIT14971
30	575/60/3	CPN02641	RPAA03050A0	KIT14971
30	380/50/3	CPN02642	RPAA03090A0	KIT14971
30	415/50/3	CPN02643	RPAA030D0A0	KIT14971
40	200/60/3	CPN02752	RPAA040F0A0	KIT14972
40	230/60/3	CPN02644	RPAA040E0A0	KIT14972
40	460/60/3	CPN02645	RPAA04040A0	KIT14972
40	575/60/3	CPN02646	RPAA04050A0	KIT14972
40	380/50/3	CPN02647	RPAA04090A0	KIT14972
40	415/50/3	CPN02648	RPAA040D0A0	KIT14972
50	200/60/3	CPN02753	RPAA050F0A0	KIT14972
50	230/60/3	CPN02649	RPAA050E0A0	KIT14972
50	460/60/3	CPN02650	RPAA05040A0	KIT14972
50	575/60/3	CPN02651	RPAA05050A0	KIT14972
50	380/50/3	CPN02652	RPAA05090A0	KIT14972
50	415/50/3	CPN02653	RPAA050D0A0	KIT14972
60	200/60/3	CPN02754	RPAA060F0A0	KIT14972
60	230/60/3	CPN02654	RPAA060E0A0	KIT14972
60	460/60/3	CPN02655	RPAA06040A0	KIT14972
60	575/60/3	CPN02656	RPAA06050A0	KIT14972
60	380/50/3	CPN02657	RPAA06090A0	KIT14972
60	415/50/3	CPN02658	RPAA060D0A0	KIT14972

**Table 2. CGW units, water cooled**

CGW unit tons	Voltage	New control panel part #	New panel model #	Required installation kit
20	208-230/60/3	CPN02659	RPWA020G1A0	KIT14969
20	380/60/3	CPN02660	RPWA02091A0	KIT14969
20	460/60/3	CPN02661	RPWA02041A0	KIT14969
20	575/60/3	CPN02662	RPWA02051A0	KIT14969
20	400/50/3	CPN02663	RPWA020N1A0	KIT14969
25	208-230/60/3	CPN02664	RPWA025G1A0	KIT14969
25	380/60/3	CPN02665	RPWA02591A0	KIT14969
25	460/60/3	CPN02666	RPWA02541A0	KIT14969

**Table 2. CGW units, water cooled**

CGW unit tons	Voltage	New control panel part #	New panel model #	Required installation kit
25	575/60/3	CPN02667	RPWA02551A0	KIT14969
25	400/50/3	CPN02668	RPWA025N1A0	KIT14969
30	208-230/60/3	CPN02669	RPWA030G1A0	KIT14969
30	380/60/3	CPN02670	RPWA03091A0	KIT14969
30	460/60/3	CPN02671	RPWA03041A0	KIT14969
30	575/60/3	CPN02672	RPWA03051A0	KIT14969
30	400/50/3	CPN02673	RPWA030N1A0	KIT14969
40	208-230/60/3	CPN02674	RPWA040G1A0	KIT14970
40	380/60/3	CPN02675	RPWA04091A0	KIT14970
40	460/60/3	CPN02676	RPWA04041A0	KIT14970
40	575/60/3	CPN02677	RPWA04051A0	KIT14970
40	400/50/3	CPN02678	RPWA040N1A0	KIT14970
50	208-230/60/3	CPN02679	RPWA050G1A0	KIT14970
50	380/60/3	CPN02680	RPWA05091A0	KIT14970
50	460/60/3	CPN02681	RPWA05041A0	KIT14970
50	575/60/3	CPN02682	RPWA05051A0	KIT14970
50	400/50/3	CPN02683	RPWA050N1A0	KIT14970
60	208-230/60/3	CPN02684	RPWA060G1A0	KIT14970
60	380/60/3	CPN02685	RPWA06091A0	KIT14970
60	460/60/3	CPN02686	RPWA06041A0	KIT14970
60	575/60/3	CPN02687	RPWA06051A0	KIT14970
60	400/50/3	CPN02688	RPWA060N1A0	KIT14970

**Table 3. CGW units with high temperature condenser (digit 17 = 4, high temp.)**

Unit tons	Voltage	New control panel part #	New panel model #	Required installation kit
20	208-230/60/3	CPN02719	RPWA020G4A0	KIT14969
20	380/60/3	CPN02720	RPWA02094A0	KIT14969
20	460/60/3	CPN02721	RPWA02044A0	KIT14969
20	575/60/3	CPN02722	RPWA02054A0	KIT14969
20	400/50/3	CPN02723	RPWA020N4A0	KIT14969
25	208-230/60/3	CPN02724	RPWA025G4A0	KIT14969
25	380/60/3	CPN02725	RPWA02594A0	KIT14969
25	460/60/3	CPN02726	RPWA02544A0	KIT14969
25	575/60/3	CPN02727	RPWA02554A0	KIT14969
25	400/50/3	CPN02728	RPWA025N4A0	KIT14969
30	208-230/60/3	CPN02729	RPWA030G4A0	KIT14969
30	380/60/3	CPN02730	RPWA03094A0	KIT14969
30	460/60/3	CPN02731	RPWA03044A0	KIT14969
30	575/60/3	CPN02732	RPWA03054A0	KIT14969
30	400/50/3	CPN02733	RPWA030N4A0	KIT14969
40	208-230/60/3	CPN02734	RPWA040G4A0	KIT14970
40	380/60/3	CPN02735	RPWA04094A0	KIT14970
40	460/60/3	CPN02736	RPWA04044A0	KIT14970
40	575/60/3	CPN02737	RPWA04054A0	KIT14970



**Table 3. CGW units with high temperature condenser (digit 17 = 4, high temp.)**

Unit tons	Voltage	New control panel part #	New panel model #	Required installation kit
40	400/50/3	CPN02738	RPWA040N4A0	KIT14970
50	208-230/60/3	CPN02739	RPWA050G4A0	KIT14970
50	380/60/3	CPN02740	RPWA05094A0	KIT14970
50	460/60/3	CPN02741	RPWA05044A0	KIT14970
50	575/60/3	CPN02742	RPWA05054A0	KIT14970
50	400/50/3	CPN02743	RPWA050N4A0	KIT14970
60	208-230/60/3	CPN02744	RPWA060G4A0	KIT14970
60	380/60/3	CPN02745	RPWA06094A0	KIT14970
60	460/60/3	CPN02746	RPWA06044A0	KIT14970
60	575/60/3	CPN02747	RPWA06054A0	KIT14970
60	400/50/3	CPN02748	RPWA060N4A0	KIT14970

**Table 4. CCA units, no unit mounted condenser**

CCA unit tons	Voltage	New control panel part #	New panel model #	Required installation kit
20	208-230/60/3	CPN02689	RPCA020G0A0	KIT14969
20	380/60/3	CPN02690	RPCA02090A0	KIT14969
20	460/60/3	CPN02691	RPCA02040A0	KIT14969
20	575/60/3	CPN02692	RPCA02050A0	KIT14969
20	400/50/3	CPN02693	RPCA020N0A0	KIT14969
25	208-230/60/3	CPN02694	RPCA025G0A0	KIT14969
25	380/60/3	CPN02695	RPCA02590A0	KIT14969
25	460/60/3	CPN02696	RPCA02540A0	KIT14969
25	575/60/3	CPN02697	RPCA02550A0	KIT14969
25	400/50/3	CPN02698	RPCA025N0A0	KIT14969
30	208-230/60/3	CPN02699	RPCA030G0A0	KIT14969
30	380/60/3	CPN02700	RPCA03090A0	KIT14969
30	460/60/3	CPN02701	RPCA03040A0	KIT14969
30	575/60/3	CPN02702	RPCA03050A0	KIT14969
30	400/50/3	CPN02703	RPCA030N0A0	KIT14969
40	208-230/60/3	CPN02704	RPCA040G0A0	KIT14970
40	380/60/3	CPN02705	RPCA04090A0	KIT14970
40	460/60/3	CPN02706	RPCA04040A0	KIT14970
40	575/60/3	CPN02707	RPCA04050A0	KIT14970
40	400/50/3	CPN02708	RPCA040N0A0	KIT14970
50	208-230/60/3	CPN02709	RPCA050G0A0	KIT14970
50	380/60/3	CPN02710	RPCA05090A0	KIT14970
50	460/60/3	CPN02711	RPCA05040A0	KIT14970
50	575/60/3	CPN02712	RPCA05050A0	KIT14970
50	400/50/3	CPN02713	RPCA050N0A0	KIT14970
60	208-230/60/3	CPN02714	RPCA060G0A0	KIT14970
60	380/60/3	CPN02715	RPCA06090A0	KIT14970
60	460/60/3	CPN02716	RPCA06040A0	KIT14970
60	575/60/3	CPN02717	RPCA06050A0	KIT14970
60	400/50/3	CPN02718	RPCA060N0A0	KIT14970

---

## Questions

Contact your local or La Crosse Parts Department with questions regarding this bulletin. The La Crosse Parts Identification team can be reached at [abupu@trane.com](mailto:abupu@trane.com) or 800-786-6502.



[www.trane.com](http://www.trane.com)

For more information, contact your local Trane office or e-mail us at [comfort@trane.com](mailto:comfort@trane.com)

---

Literature Order Number	PART-SVB19A-EN
-------------------------	----------------

Date	March 2008
------	------------

Supersedes	New
------------	-----

---

Trane has a policy of continuous product data and product improvement and reserves the right to change design and specifications without notice. Only qualified technicians should perform the installation and servicing of equipment referred to in this bulletin.