

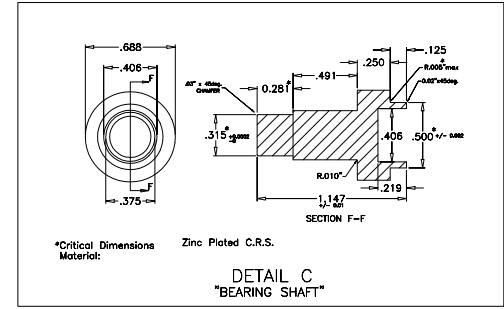
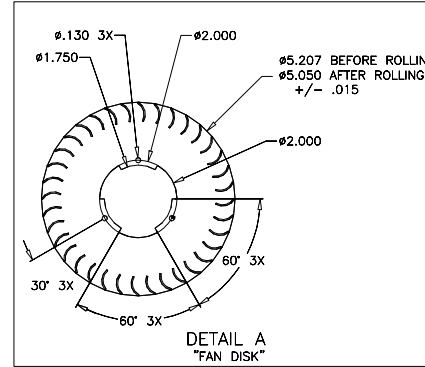
SPECIFICATIONS:
 MATERIAL - 3003-H14 ALUMINUM (BLADES AND DISKS)
 MAX UNBALANCE .12 OZ-IN
 RADIAL RUNOUT - MUST NOT EXCEED .030 TIR
 AXIAL RUNOUT - MUST NOT EXCEED .030 TIR
 NUMBER OF FAN BLADES - 36
 BLADE THICKNESS - .030 ±.003
 DISK THICKNESS - .062 ±.0035

EXT	SIZE	ROTATION	N	L1
010	300	CW	5	23.035 ±.030
020	400	CW	7	32.535 ±.030
030	600	CW	8	41.035 ±.030
040	300	CCW	5	23.035 ±.030
050	400	CCW	7	32.535 ±.030
060	600	CCW	8	41.035 ±.030

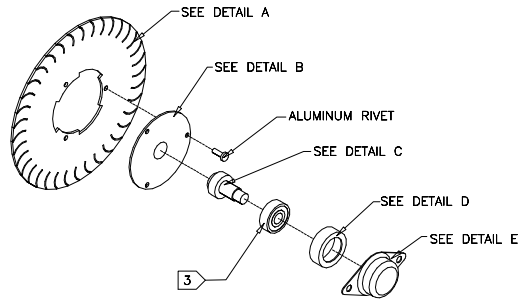
TOLERANCE UNLESS OTHERWISE SPECIFIED .X = ± .030 .XX = ± .015 .XXX = ± .005 ANGLES = ± 1 ° HOLE DIA = ± REF. ANSI Y14.5M-1982	AUTOCAD DO NOT SCALE PRINT FINISH ✓ DRAWN BY: J. LAND DATE: 04/09/02 CHECKED TO: X38020348	THE TRANE COMPANY A DIVISION OF AMERICAN STANDARD INC. THIS DRAWING IS PROPRIETARY AND SHALL NOT BE COPIED OR ITS CONTENTS DISCLOSED TO OTHER PARTIES WITHOUT THE EXPRESS CONSENT OF THE TRANE COMPANY	X38010498 REV A
		FANWHEEL LOW VERTICAL FC 5.00 DIA ALUM - CW & CCW ROTATION	

NOTES:

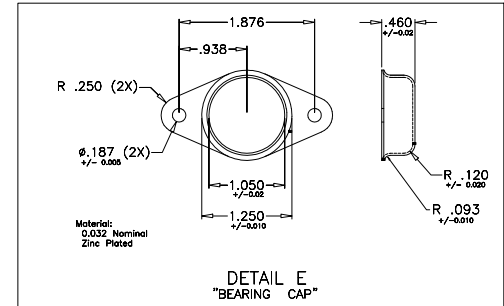
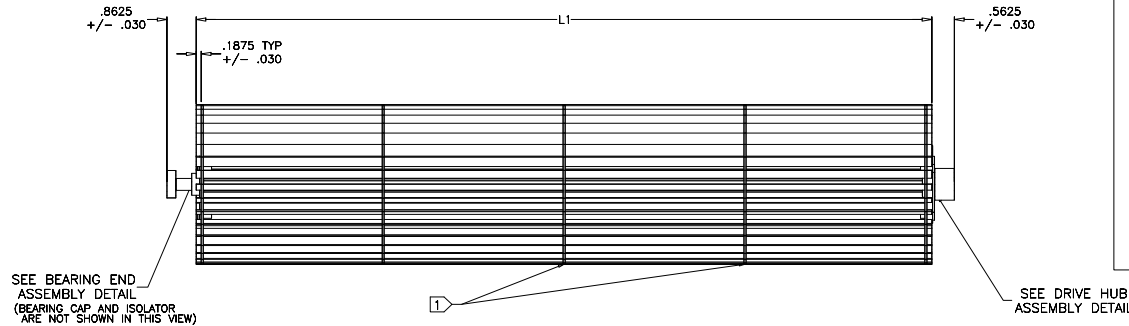
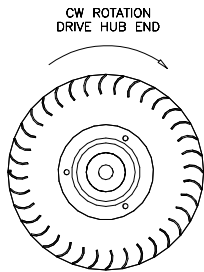
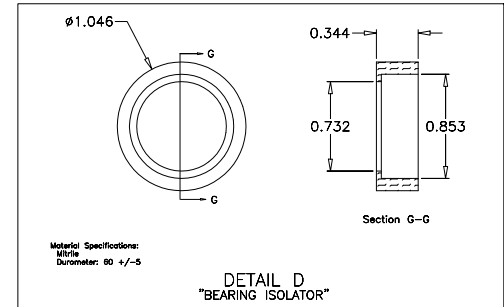
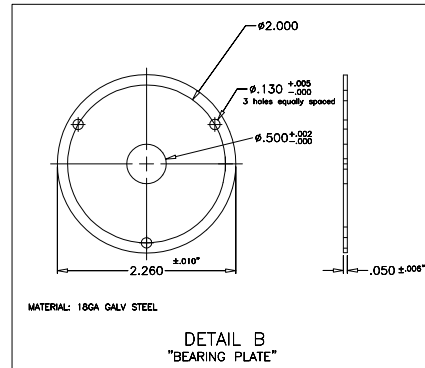
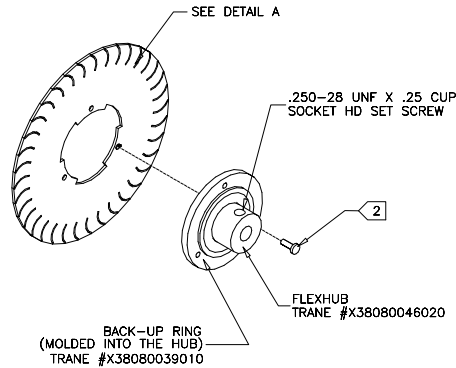
- TOTAL NUMBER OF DISKS = N.
- 1/8 DIA X .39 LONG STAINLESS STEEL POP RIVET
POP SSD44BS OR EQUIVALENT) 3X PER ASSEMBLY; 6X TOTAL
- BALL BEARING 22mm OD, 8mm ID, 7mm WIDE
(KOYO-SEIKO 608Z OR EQUIVALENT)



BEARING END ASSEMBLY



DRIVE HUB ASSEMBLY



SEE BEARING END ASSEMBLY DETAIL (BEARING CAP AND ISOLATOR ARE NOT SHOWN IN THIS VIEW)

SEE DRIVE HUB ASSEMBLY DETAIL