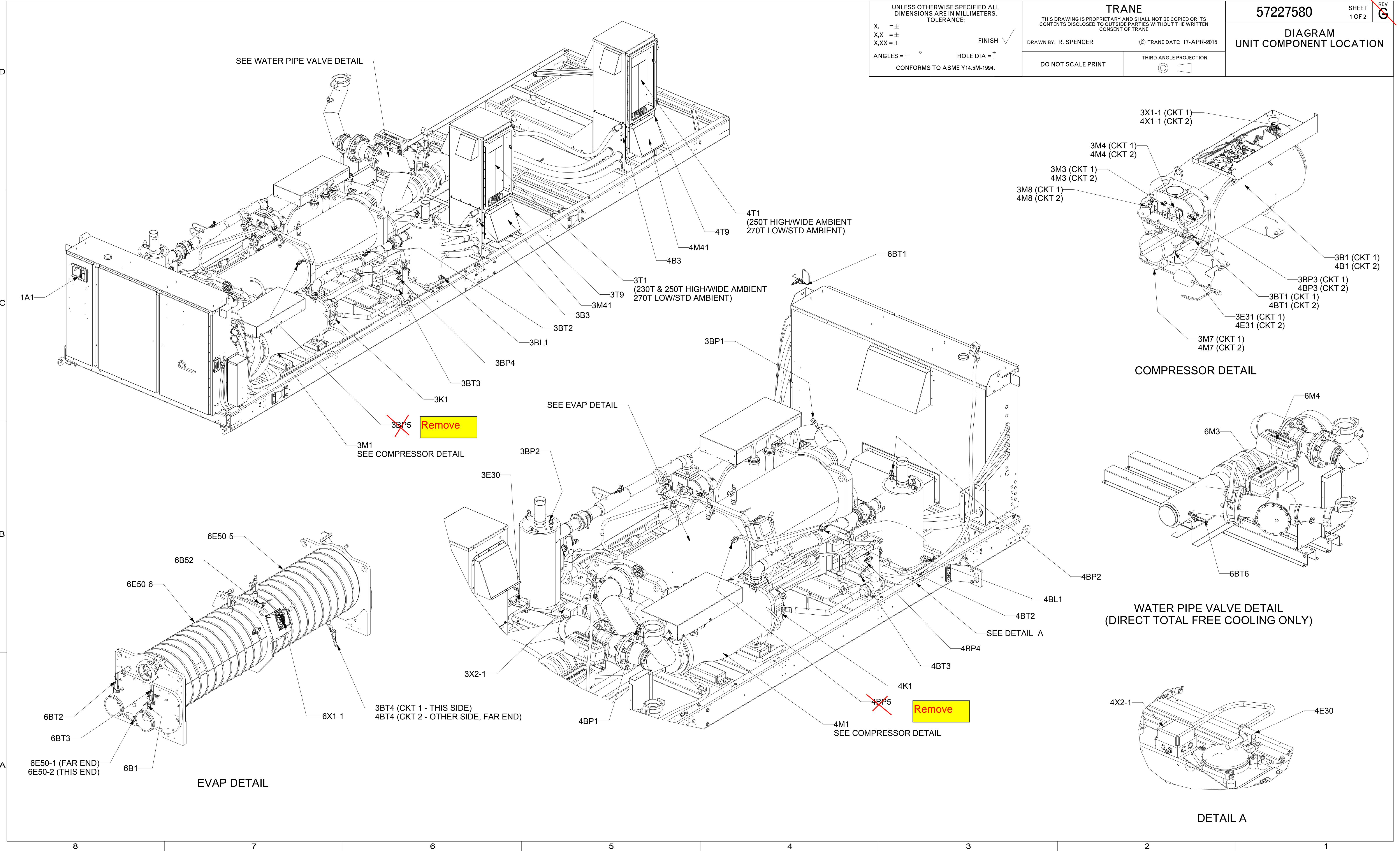


UNLESS OTHERWISE SPECIFIED ALL DIMENSIONS ARE IN MILLIMETERS.  
TOLERANCE:  
X, = ±  
X.X = ±  
X.XX = ±  
ANGLES = ± °  
HOLE DIA = ±

FINISH ✓  
CONFORMS TO ASME Y14.5M-1994.

**TRANE**  
THIS DRAWING IS PROPRIETARY AND SHALL NOT BE COPIED OR ITS CONTENTS DISCLOSED TO OUTSIDE PARTIES WITHOUT THE WRITTEN CONSENT OF TRANE  
DRAWN BY: R. SPENCER  
© TRANE DATE: 17-APR-2015  
DO NOT SCALE PRINT  
THIRD ANGLE PROJECTION

57227580  
SHEET 1 OF 2  
REV  
DIAGRAM UNIT COMPONENT LOCATION





DEVICE	DESCRIPTION
1A1	ADAPTIVIEW TOUCH SCREEN DISPLAY
3B1	SWITCH; HIGH PRESSURE CUTOUT - CIRCUIT 1
3B3	TEMPERATURE SWITCH; VENTILATION FAN ENABLE
3BL1	LEVEL SENSOR; OIL LOSS - COMPRESSOR 1A
3BP1	PRESSURE TRANSDUCER; SUCTION PRESSURE - CIRCUIT 1
3BP2	PRESSURE TRANSDUCER; DISCHARGE PRESSURE - CIRCUIT 1
3BP3	PRESSURE TRANSDUCER; OIL PRESSURE - CIRCUIT 1
3BP4	PRESSURE TRANSDUCER; LIQUID PRESSURE MICROCHANNEL EVAP - CIRCUIT 1
<del>3BP5</del>	<del>PRESSURE TRANSDUCER; EVAPORATOR - CIRCUIT 1</del>
3BT1	TEMPERATURE SENSOR; OIL TEMPERATURE - CIRCUIT 1
3BT2	TEMPERATURE SENSOR; DISCHARGE TEMPERATURE - CIRCUIT 1
3BT3	TEMPERATURE SENSOR; LIQUID LINE TEMPERATURE MICROCHANNEL EVAP - CIRCUIT 1
3BT4	TEMPERATURE SENSOR; EVAPORATOR POOL TEMPERATURE - CIRCUIT 1
3E30	HEATER; OIL SEPARATOR - CIRCUIT 1
3E31	HEATER; CRANKCASE - COMPRESSOR 1A
3K1	ELECTRONIC EXPANSION VALVE CKT 1
3M1	MOTOR; COMPRESSOR 1A
3M3	SOLENOID; PROPORTIONAL UNLOAD CONTROL - COMPRESSOR 1A
3M4	SOLENOID; PROPORTIONAL LOAD CONTROL - COMPRESSOR 1A
3M7	SOLENOID; OIL - COMPRESSOR 1A
3M8	SOLENOID; STEP LOAD CONTROL - COMPRESSOR 1A
3M11	MOTOR; CONDENSER FAN - CIRCUIT 1
3M12	MOTOR; CONDENSER FAN - CIRCUIT 1
3M13	MOTOR; CONDENSER FAN - CIRCUIT 1
3M14	MOTOR; CONDENSER FAN - CIRCUIT 1
3M15	MOTOR; CONDENSER FAN - CIRCUIT 1
3M16	MOTOR; CONDENSER FAN - CIRCUIT 1
3M25	SOLENOID; CONDENSER LIQUID RECEIVER, CKT 1
3M32	MOTOR; CONDENSER FAN - CIRCUIT 1
3M41	MOTOR; VENTILATION FAN 1
3T1	AFD; COMPRESSOR 1A
3T9	CHOKE; CIRCUIT 1
3X1-1	TERMINAL BLOCK; JUNCTION BOX - COMPRESSOR 1A
3X2-1	TERMINAL BLOCK; JUNCTION BOX - OIL SEPARATOR CIRCUIT 1
4B1	SWITCH; HIGH PRESSURE CUTOUT - CIRCUIT 2
4B3	TEMPERATURE SWITCH; VENTILATION FAN ENABLE
4BL1	LEVEL SENSOR; OIL LOSS - COMPRESSOR 2A
4BP1	PRESSURE TRANSDUCER; SUCTION PRESSURE - CIRCUIT 2
4BP2	PRESSURE TRANSDUCER; DISCHARGE PRESSURE - CIRCUIT 2
4BP3	PRESSURE TRANSDUCER; OIL PRESSURE - CIRCUIT 2
4BP4	PRESSURE TRANSDUCER; LIQUID PRESSURE MICROCHANNEL EVAP - CIRCUIT 2
<del>4BP5</del>	<del>PRESSURE TRANSDUCER; EVAPORATOR - CIRCUIT 2</del>
4BT1	TEMPERATURE SENSOR; OIL TEMPERATURE - CIRCUIT 2
4BT2	TEMPERATURE SENSOR; DISCHARGE TEMPERATURE - CIRCUIT 2
4BT3	TEMPERATURE SENSOR; LIQUID LINE TEMPERATURE MICROCHANNEL EVAP - CIRCUIT 2
4BT4	TEMPERATURE SENSOR; EVAPORATOR POOL TEMPERATURE - CIRCUIT 2
4E30	HEATER; OIL SEPARATOR - CIRCUIT 2
4E31	HEATER; CRANKCASE - COMPRESSOR 2A
4K1	ELECTRONIC EXPANSION VALVE CKT 2
4M1	MOTOR; COMPRESSOR 2A
4M3	SOLENOID; PROPORTIONAL UNLOAD CONTROL - COMPRESSOR 2A
4M4	SOLENOID; PROPORTIONAL LOAD CONTROL - COMPRESSOR 2A
4M7	SOLENOID; OIL - COMPRESSOR 2A
4M8	SOLENOID; STEP LOAD CONTROL - COMPRESSOR 2A
4M11	MOTOR; CONDENSER FAN - CIRCUIT 2
4M12	MOTOR; CONDENSER FAN - CIRCUIT 2
4M13	MOTOR; CONDENSER FAN - CIRCUIT 2
4M14	MOTOR; CONDENSER FAN - CIRCUIT 2
4M15	MOTOR; CONDENSER FAN - CIRCUIT 2
4M16	MOTOR; CONDENSER FAN - CIRCUIT 2
4M25	SOLENOID; CONDENSER LIQUID RECEIVER, CKT 2
4M31	MOTOR; CONDENSER FAN - CIRCUIT 2
4M41	MOTOR; VENTILATION FAN 1
4T1	AFD; COMPRESSOR 2A
4T9	CHOKE; CIRCUIT 2
4X1-1	TERMINAL BLOCK; JUNCTION BOX - COMPRESSOR 2A
4X2-1	TERMINAL BLOCK; JUNCTION BOX - OIL SEPARATOR CIRCUIT 2
6B1	SWITCH; EVAPORATOR WATER FLOW
6B52	THERMOSTAT; ANTIFREEZE HEATER
6BT1	TEMPERATURE SENSOR; OUTDOOR AIR SENSOR
6BT2	TEMPERATURE SENSOR; EVAPORATOR LEAVING WATER TEMPERATURE
6BT3	TEMPERATURE SENSOR; EVAPORATOR ENTERING WATER TEMPERATURE
6BT6	FREE COOLING ENTERING WATER TEMPERATURE SENSOR
6E50-1	SUBMERSION HEATER; EVAPORATOR SHELL ANTIFREEZE HEATER
6E50-2	SUBMERSION HEATER; EVAPORATOR SHELL ANTIFREEZE HEATER
6E50-5	HEAT TAPE; EVAPORATOR SHELL ANTIFREEZE HEATER
6E50-6	HEAT TAPE; EVAPORATOR SHELL ANTIFREEZE HEATER
6M3	ACTUATOR; BYPASS MODULATING VALVE
6M4	ACTUATOR; LINE MODULATING VALVE
6X1-1	TERMINAL BLOCK; EVAPORATOR HEATER JUNCTION BOX

Remove 3BP5

Remove 4BP5

UNLESS OTHERWISE SPECIFIED ALL DIMENSIONS ARE IN MILLIMETERS. TOLERANCE:

X, = ±  
X,X = ±  
X,XX = ±

FINISH ✓  
HOLE DIA = +  
CONFORMS TO ASME Y14.5M-1994.

**TRANE**

THIS DRAWING IS PROPRIETARY AND SHALL NOT BE COPIED OR ITS CONTENTS DISCLOSED TO OUTSIDE PARTIES WITHOUT THE WRITTEN CONSENT OF TRANE

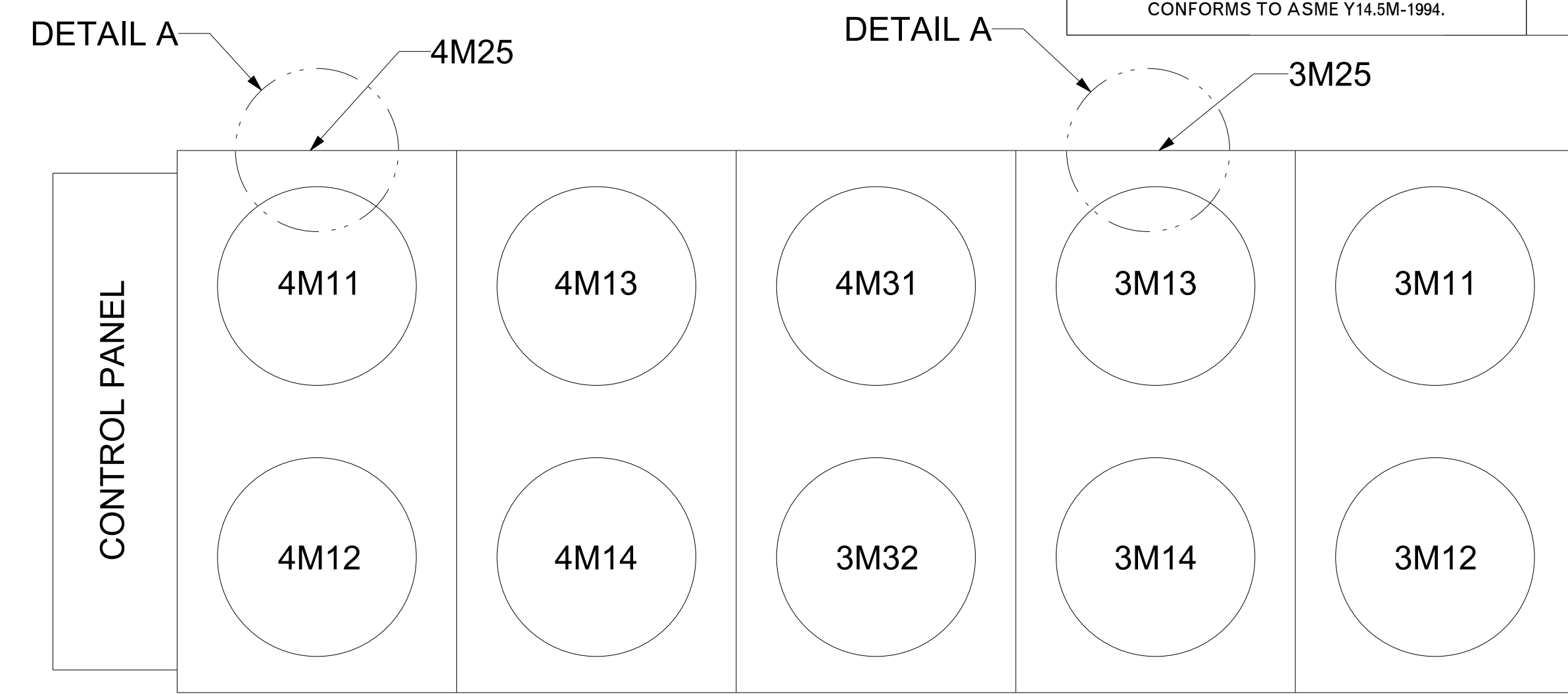
DRAWN BY: R. SPENCER      © TRANE DATE: 17-APR-2015

DO NOT SCALE PRINT      THIRD ANGLE PROJECTION

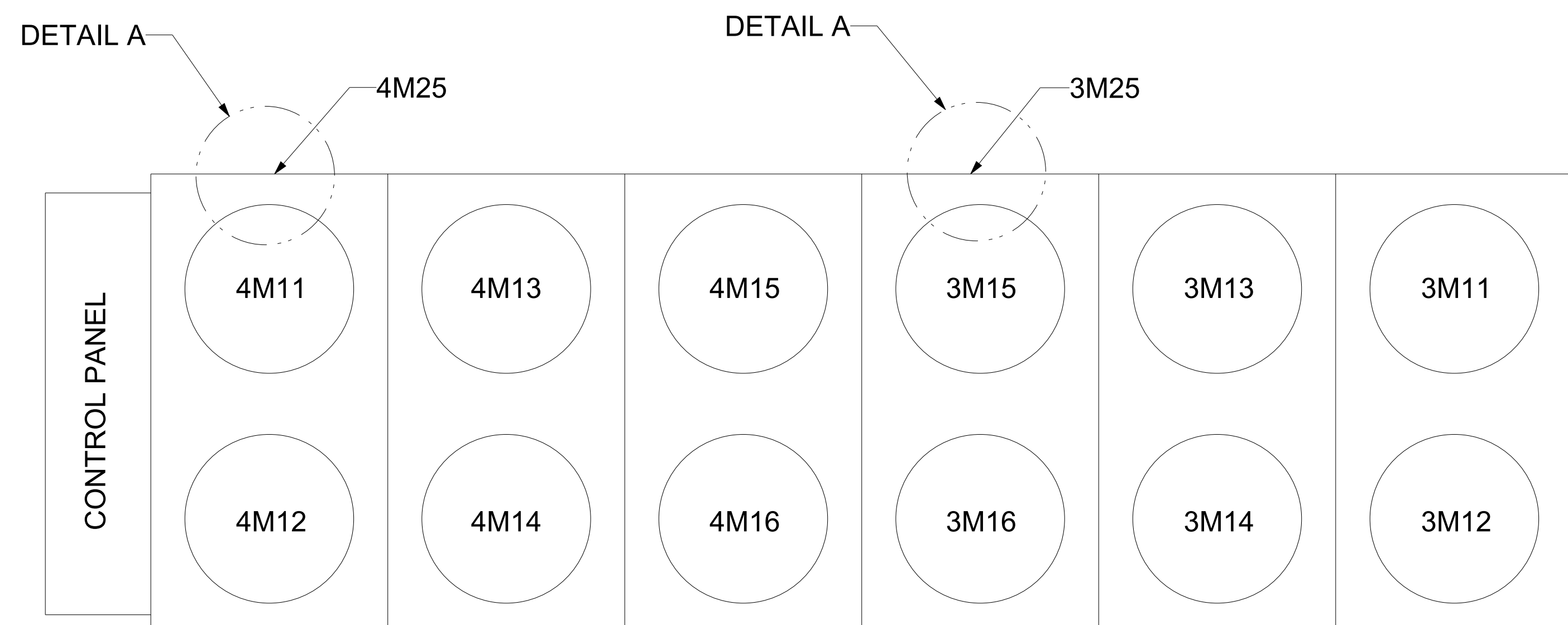
57227580      SHEET 2 OF 2

**DIAGRAM**  
**UNIT COMPONENT LOCATION**

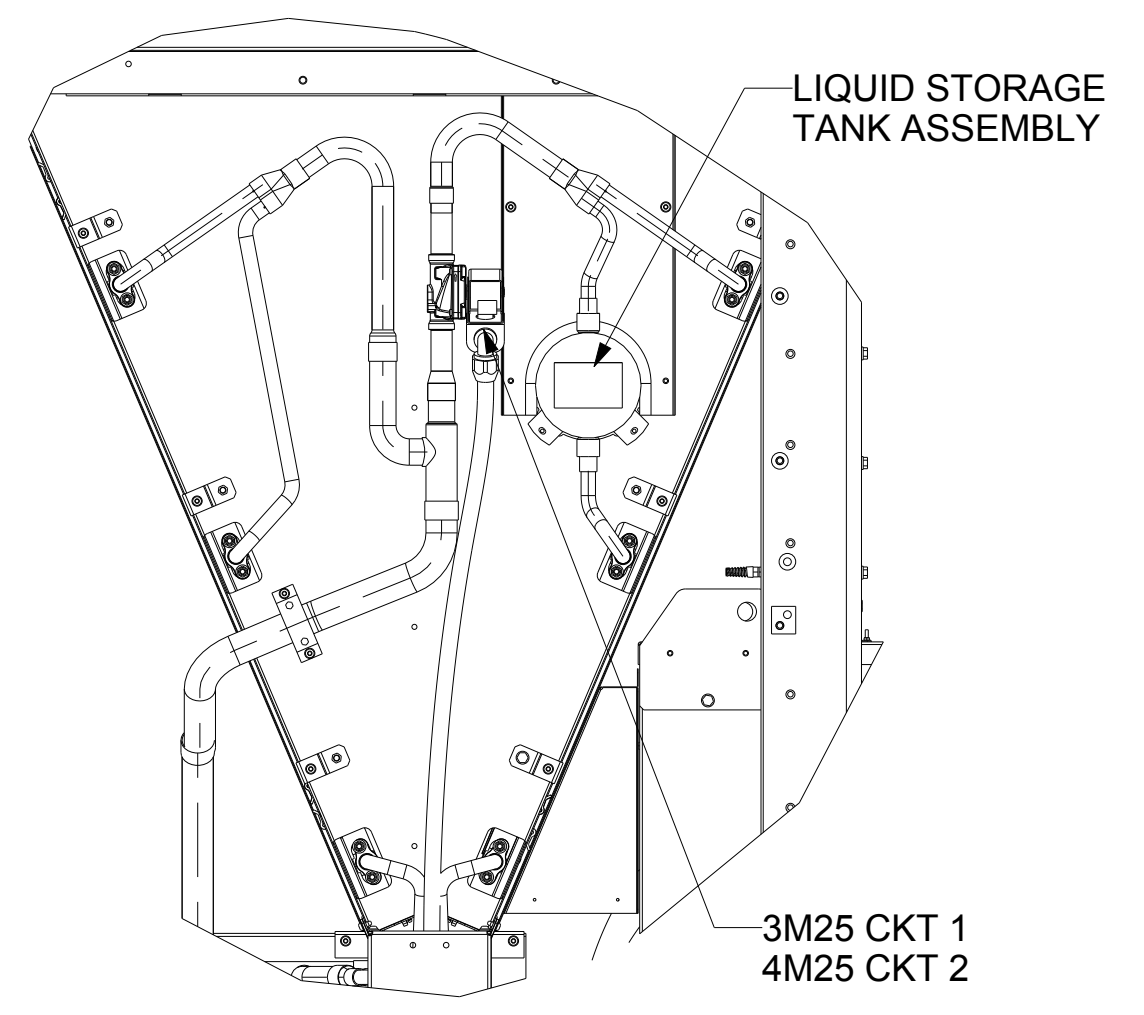
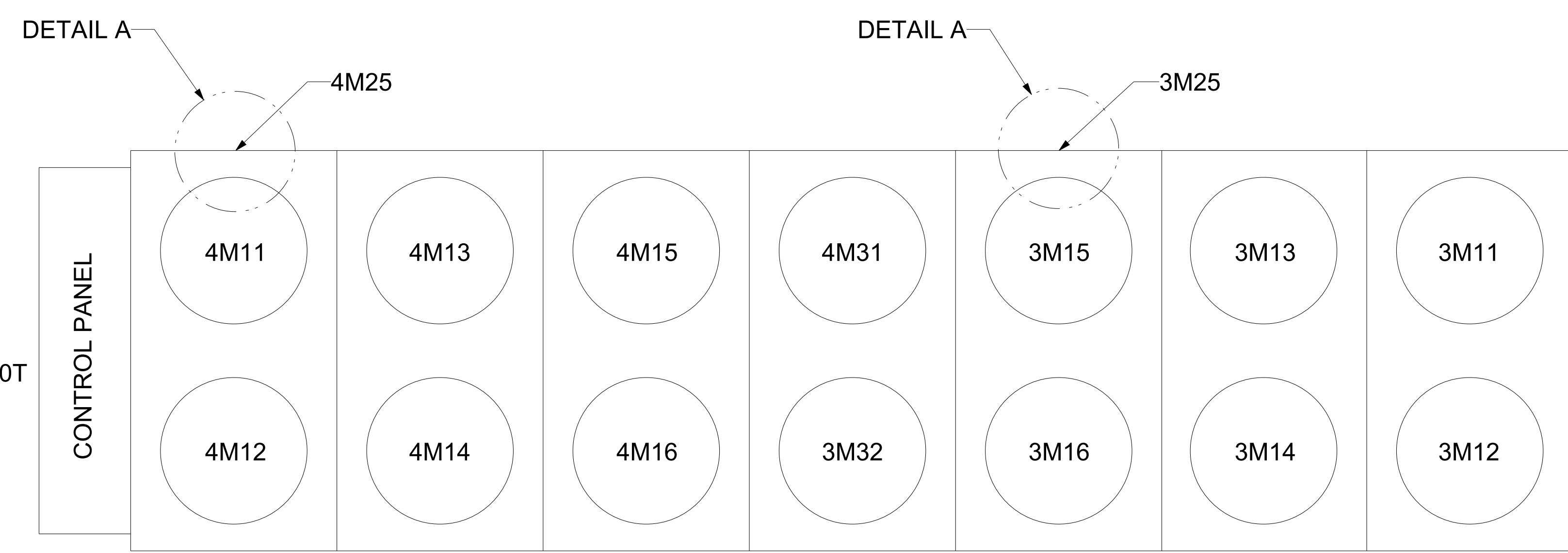
FAN LAYOUT 115T, 130T



FAN LAYOUT 150T, 170T, 180T



FAN LAYOUT 200T, 215T, 230T, 250T, 270T



DETAIL A (PIE PANEL REMOVED)