

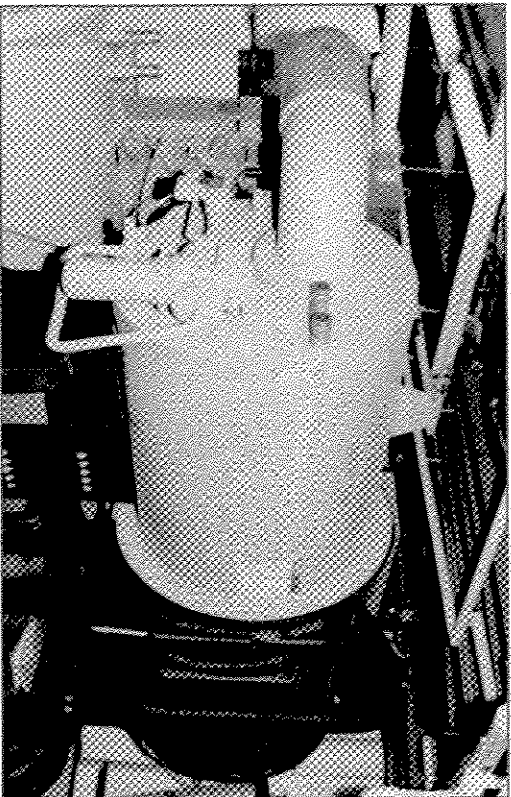
Noise and Vibration Control, Inc.

112 FAIRVIEW AVE., P.O. BOX 127, WIND GAP, PA 18091-0127 - 610-863-6300 FAX: 610-863-4230
 E-mail: brd@epix.net Web: www.brd-nonoise.com

HUSHCORE™ NOISE REDUCTION SYSTEMS FOR LIQUID COOLED CHILLERS

HUSHCORE™ System	Treatment Strategy				Typical Noise Reductions	Application Guidelines
	Source Control	HUSH COVERS™ for compressors	HUSH FLEX™ modular full enclosure	HUSH GUARD™ modular enclosure		
Economy	X (HC-450-1 1/2")				3 – 5 dBA	Non Critical
Standard	X (HC-450-1 1/2")	X (HC-450-1 1/2")			6 – 8 dBA	Best Value dBA Reduction/\$ Spent
Premium			X (ABAC-111N)		12 – 15 dBA	Noise Sensitive Projects
Ultimate				X (HG-400)	15 – 20 dBA	Critical Projects

NOTE: For Performing Arts Venues or where project requires noise analysis, please consult BRD for assistance.



Untreated Chiller

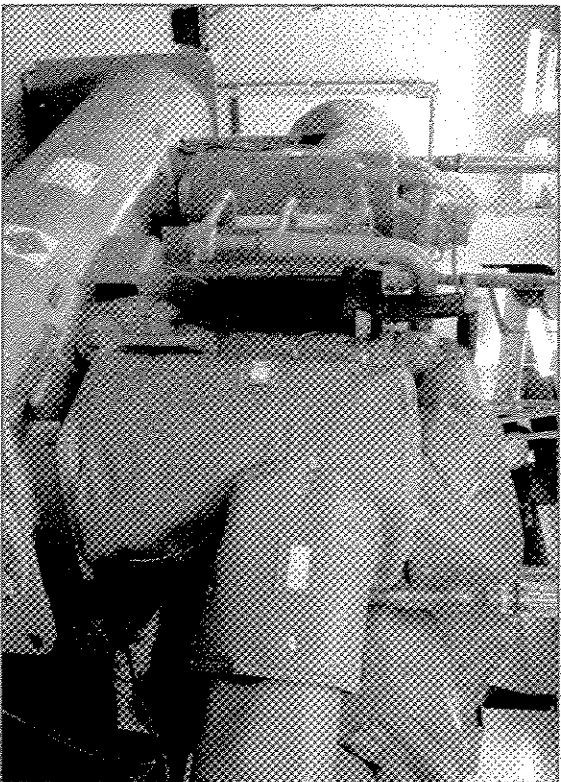


Chiller with HUSH COVER™ Blankets

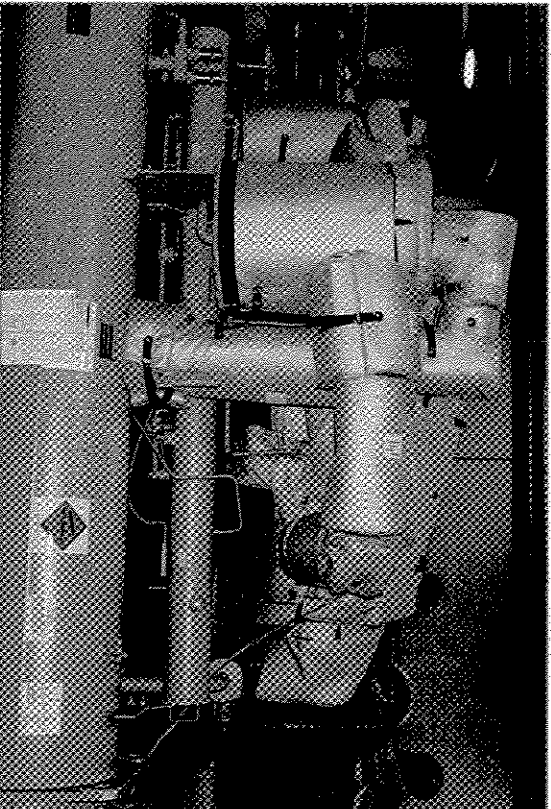
HUSHCORE™ ECONOMY SYSTEM

Liquid Cooled Chillers

- Source control
- HUSH COVER™ Removable Sound Blankets
- Compressor only treated
- RTHB chiller model shown
- 3 to 5 dBA typical reduction
- HC-450-1 ½" blanket construction
- Wire tie or D ring fastening bands
- Non-critical applications



RTHC with HUSH COVERS™ and wire tie fastening

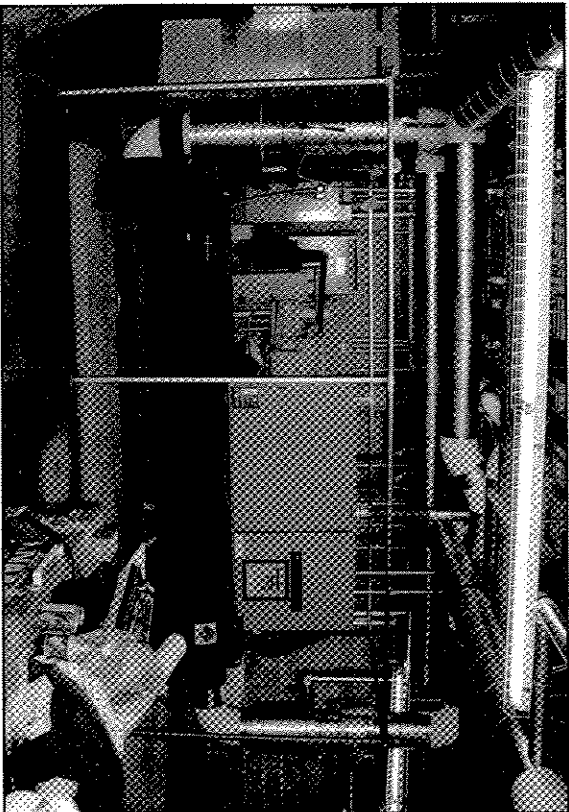


RTHD with HUSH COVERS™ and “D” ring banding

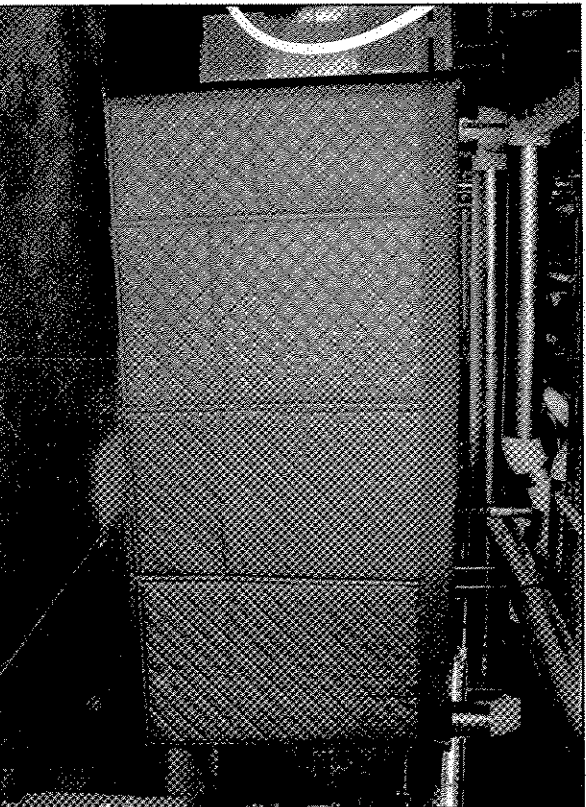
HUSHCORE™ STANDARD SYSTEM

Liquid Cooled Chillers

- Source control
- HUSH COVER™ Removable Sound Blankets
- Compressor, discharge pipes, oil and vapor separators treated
- RTHC and RTHD chiller models shown
- 6 to 8 dBA typical reduction
- HC-450-1 ½” blanket construction
- Wire tie or D ring fastening bands
- Applications for moderate level of noise reduction



Chiller and Enclosure Framework

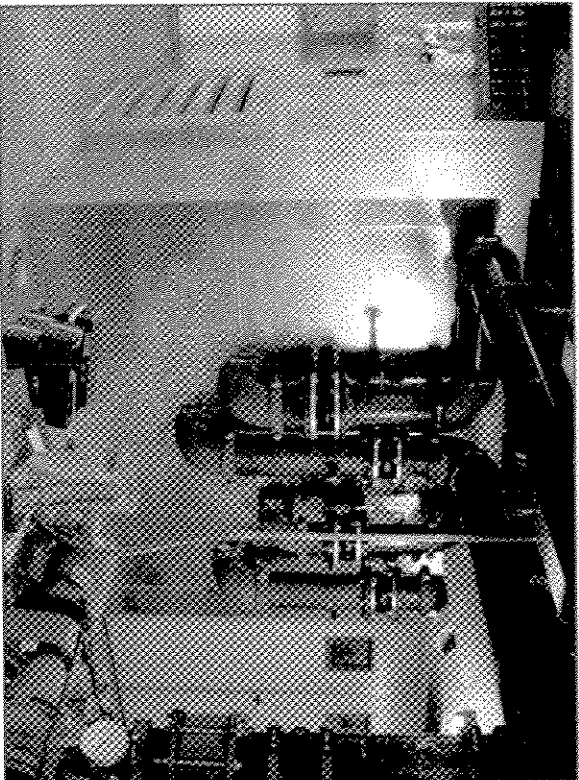


Finished HUSH FLEX™ Curtain Enclosure

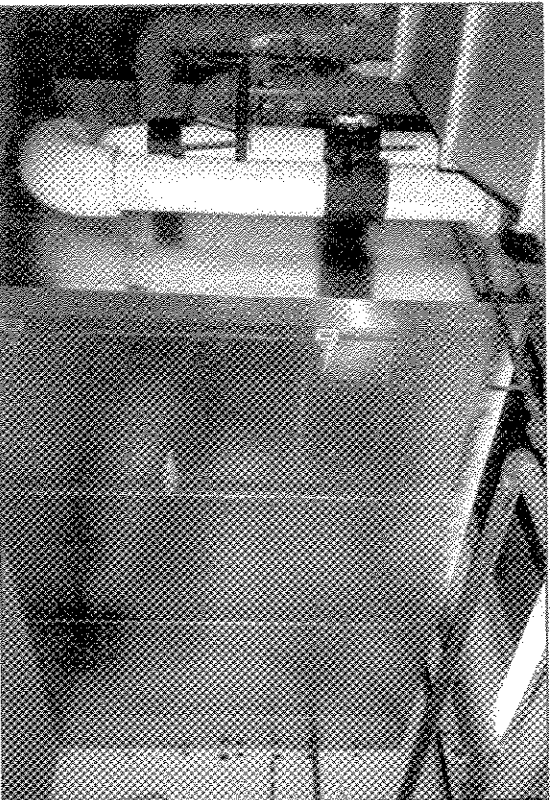
HUSHCORE™ PREMIUM SYSTEM

Liquid Cooled Chillers

- Direct path control
- HUSH FLEX™ acoustical curtain system
- Sliding panel perimeter walls and removable roof
- RTHC chiller model shown
- 12 to 15 dBA typical reduction
- ABAC-111N curtain construction
- Velcro panel joining
- Noise sensitive applications



Ultimate System for RTHD Model



Ultimate System for RTHC Model

HUSHCORE™ ULTIMATE SYSTEM

Liquid Cooled Chillers

- Direct Path Control
- HUSH GUARD™ modular panel enclosure
- Full enclosure with access doors and removable service panels
- Two screw chiller models shown
- 15 to 20 dBA typical reduction
- HG-400 panel construction
- Optional ventilation system
- Critical attenuation projects