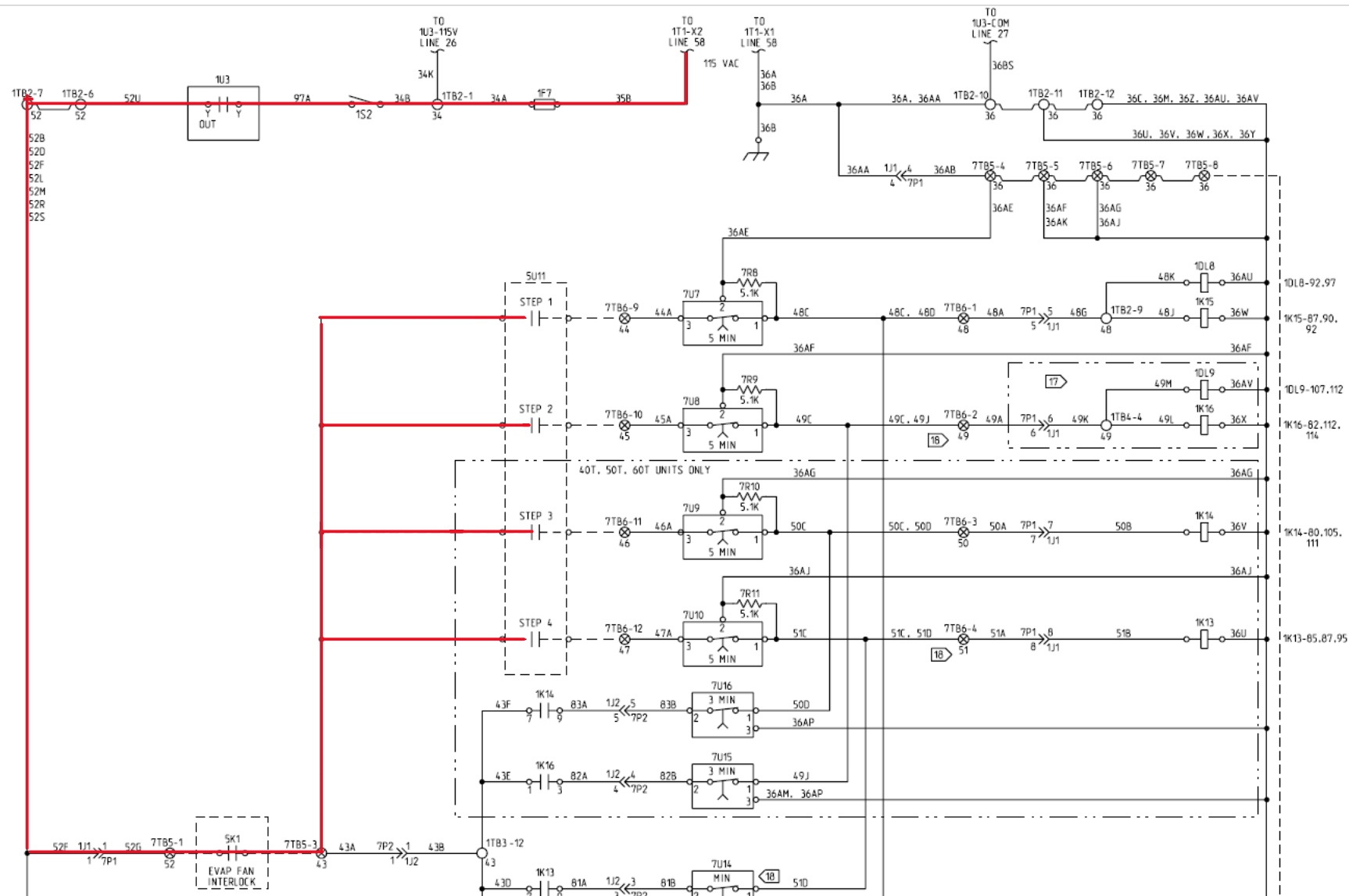


RAUJ Reset Relay Troubleshooting

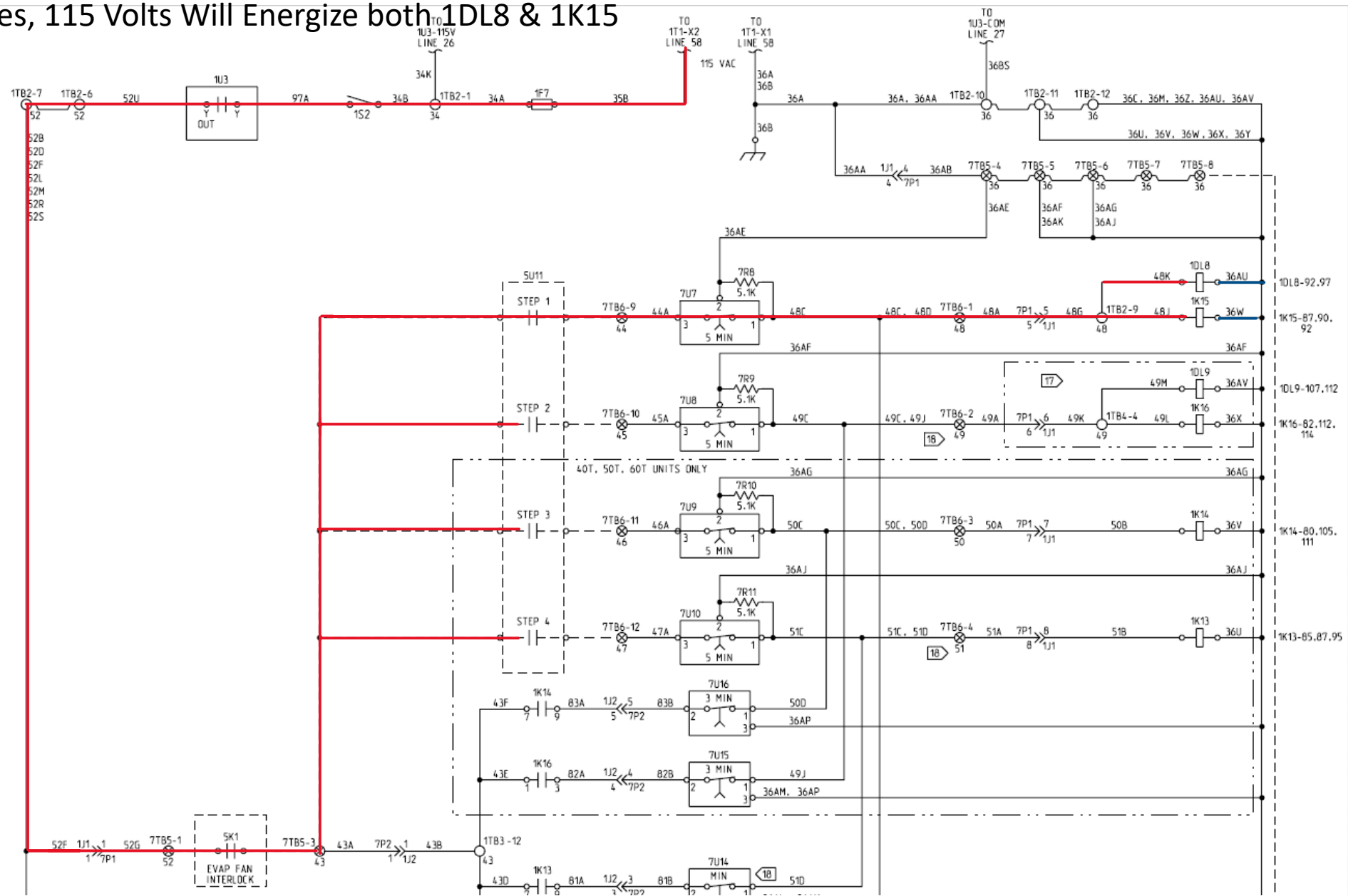
-115 Volt Flows though the 1S1 (Control Switch), Phase monitor & Field Install Evap Fan Interlock

-115 Volt Stops at the N/O Field Install Relays (5U11)



Call for 1st Stage of Cooling

- Relay 1 (Step 1 5U11) Closes
- After 5 Minutes, 115 Volts Will Energize both 1DL8 & 1K15



Normal Operation

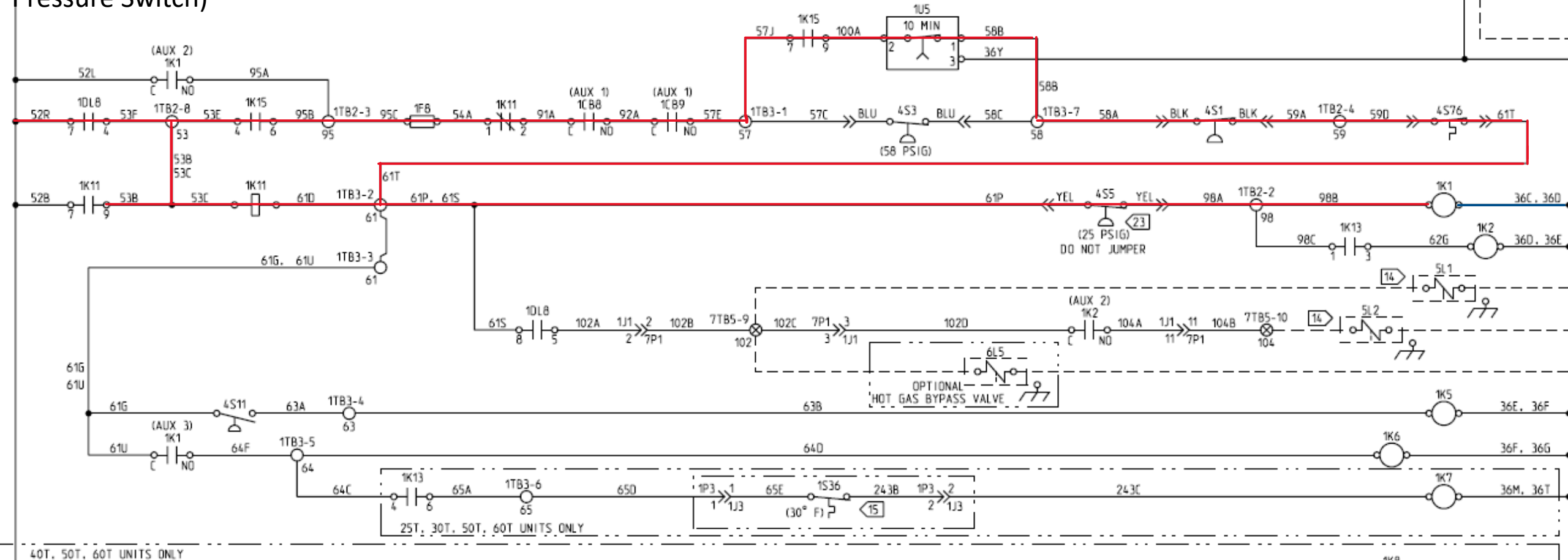
-1K15 Closes

-Once 1DL8 Times out, the N/O 1DL8 Closes

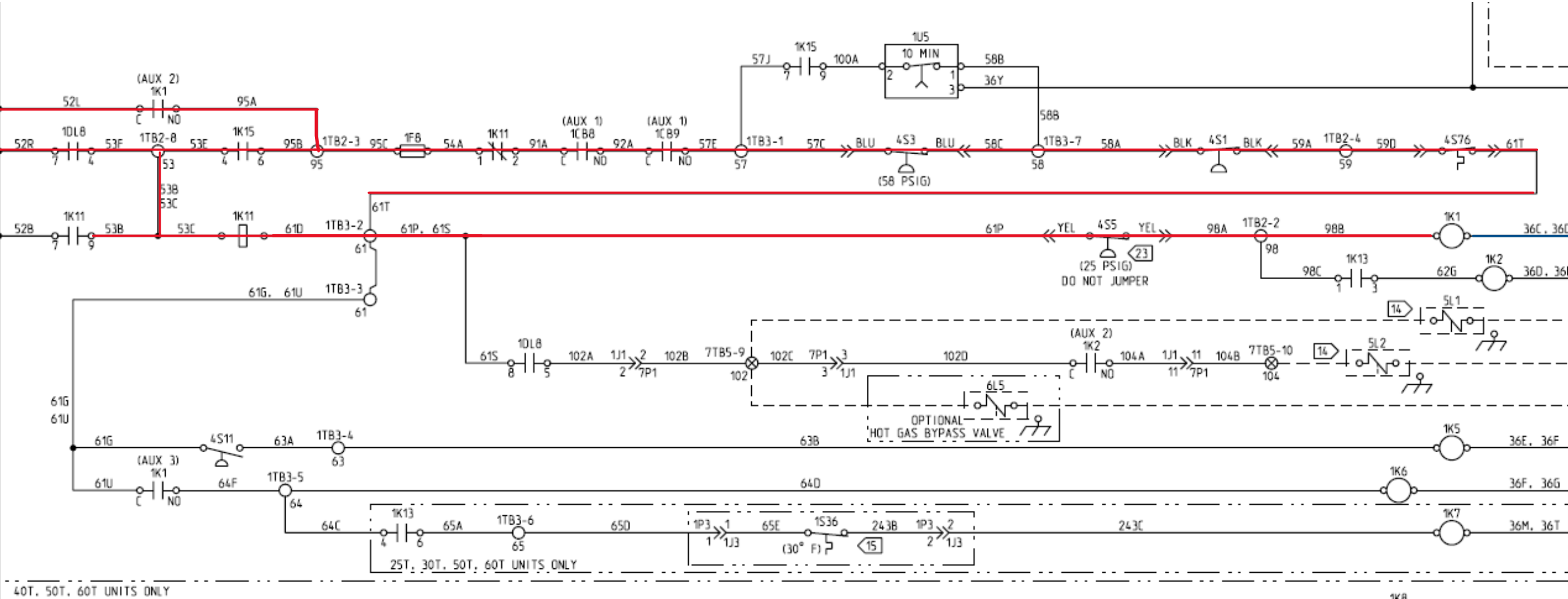
-If all Safety CKTs are Close, the 1K11 can not energize because 1K1 is Energize. 1K11 does not have a Path to Common

-1K1 will energize, Closing N/O 1K1 AUX, bypassing 1DL8 & 1K15 and start the Compressor

-After 10 Minutes, 1U5 (Low Pressure Bypass Timer) will open its contacts and allow Current to Flow though the 4S3 (Low Pressure Switch)



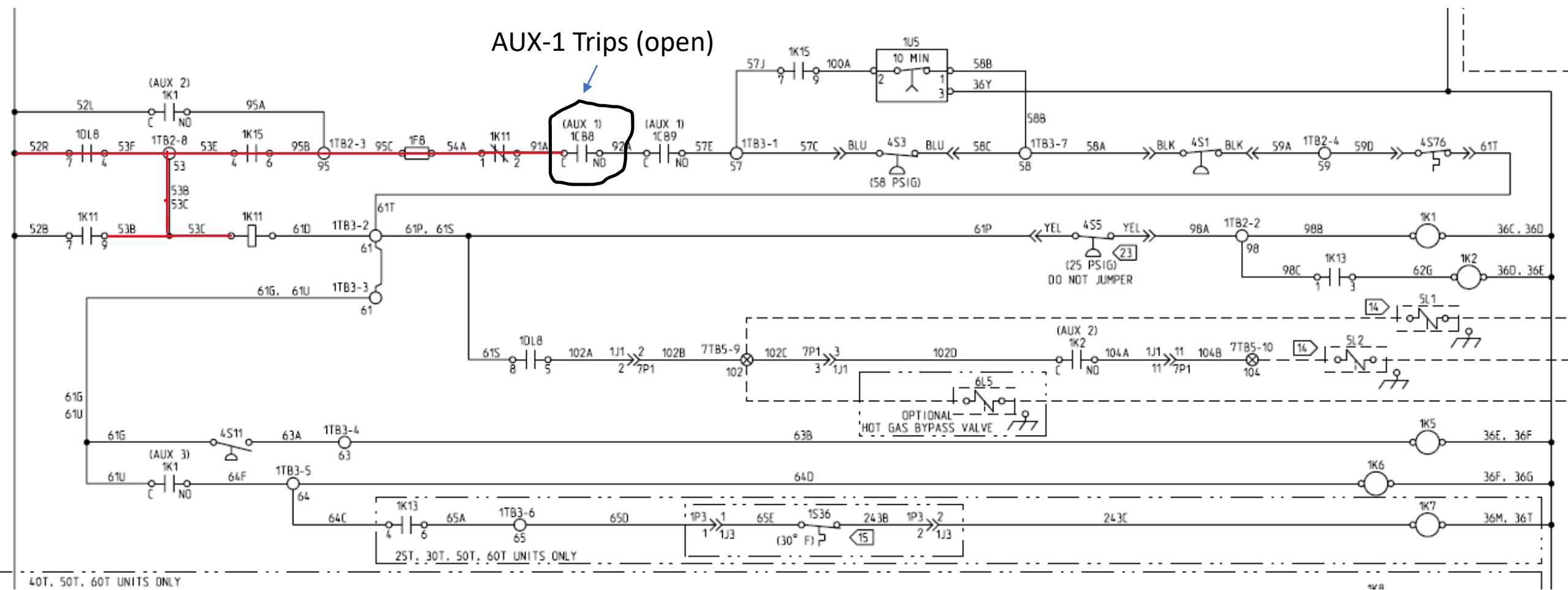
Normal Operation



CKT Fault

Example

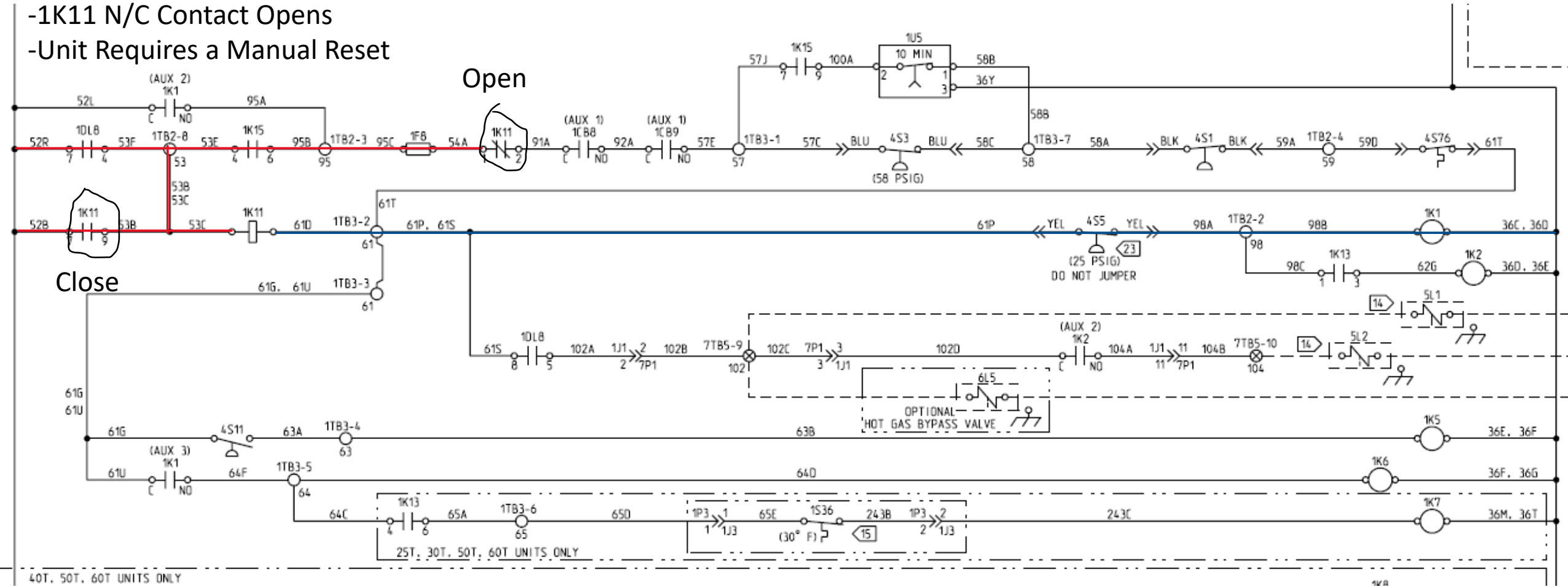
-Safety CKT Opens (AUX-1).



CKT Fault

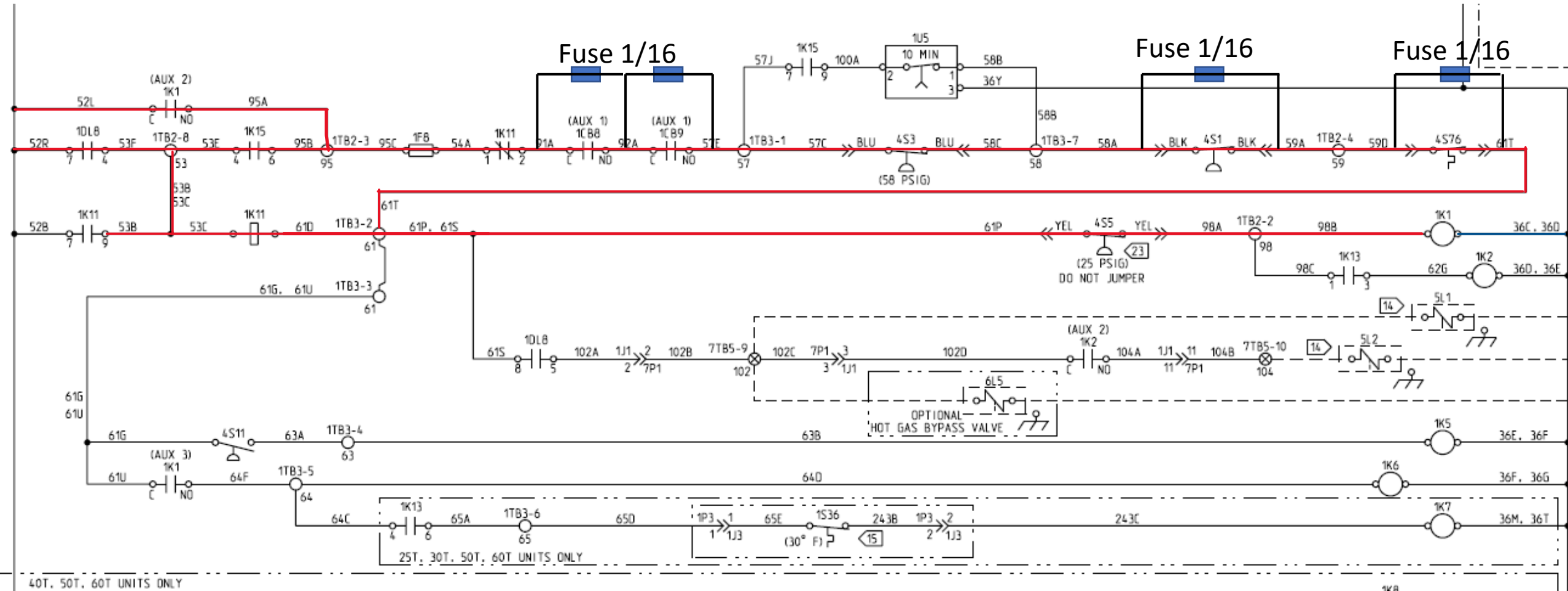
Example

- Safety CKT Opens (AUX-1).
- 1K1 De-energize, allowing a path to common for the 1K11 (reset Relay)
- 1K11 (Reset Relay) Energizes, Closing N/O 1K11 Contacts. Locking 120 volts in at the Reset Relay Coil
- 1K11 N/C Contact Opens
- Unit Requires a Manual Reset



Troubleshooting CKT Faults

- If you are having intermitten Trips and can not find out why the CKT is tripping
- Install 1/16 amp fuse Parallel to the safeties
- If the Safety opens, the current will flow though the fuse and blow
- This will tell you which switch it tripping



Example of an open Safety with 1/16 amp Fusing Wired Parallel

- AUX-1 Tripped
- 1/16 Amp Fuse Open
- Reset Relay is now Energize, Locking out the CKT
- 1K11 N/C Contact Opens
- 1K11 N/O Contact Closes, Locking in the Reset Relay

Fuse 1/16
Blown

