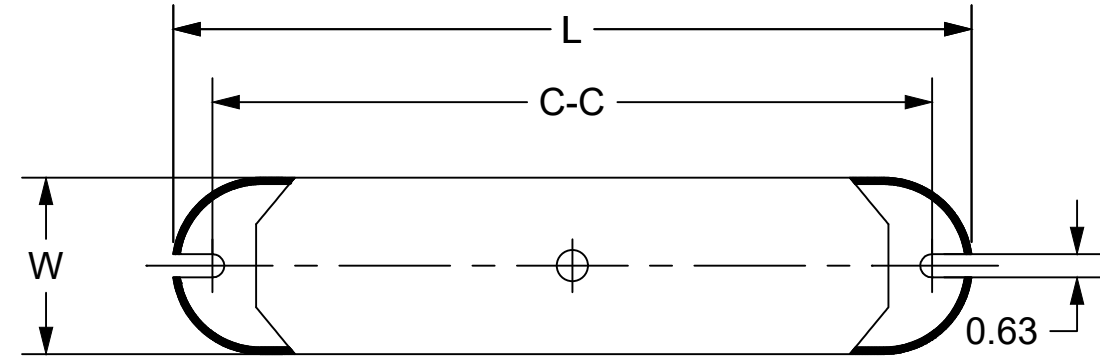
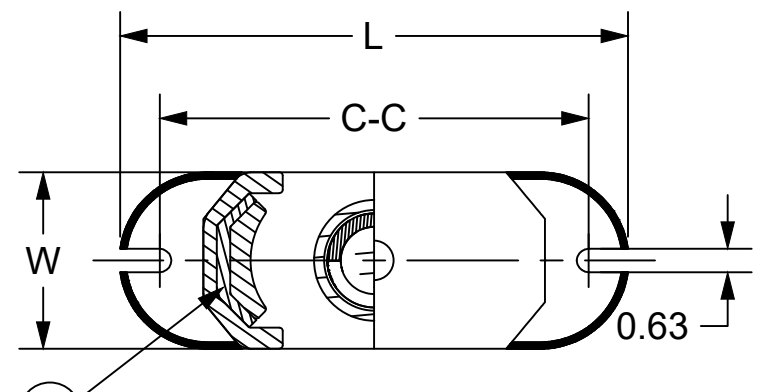


UNLESS OTHERWISE SPECIFIED ALL DIMENSIONS ARE IN INCHES. TOLERANCE:
 .X = ±
 .XX = ±
 .XXX = ±
 FINISH ✓
 ANGLES = ± ° HOLE DIA = ±
 CONFORMS TO ASME Y14.5M-1994.

TRANE
 THIS DRAWING IS PROPRIETARY AND SHALL NOT BE COPIED OR ITS CONTENTS DISCLOSED TO OUTSIDE PARTIES WITHOUT THE WRITTEN CONSENT OF TRANE
 DRAWN BY: MCCLELLEN © TRANE DATE: 12-19-75
 DO NOT SCALE PRINT THIRD ANGLE PROJECTION

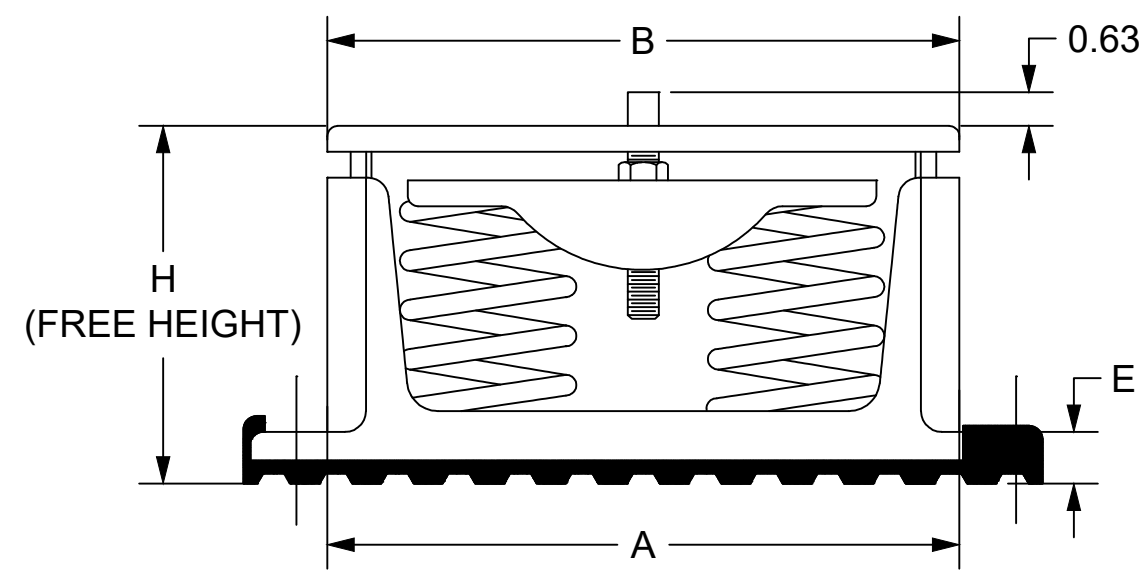
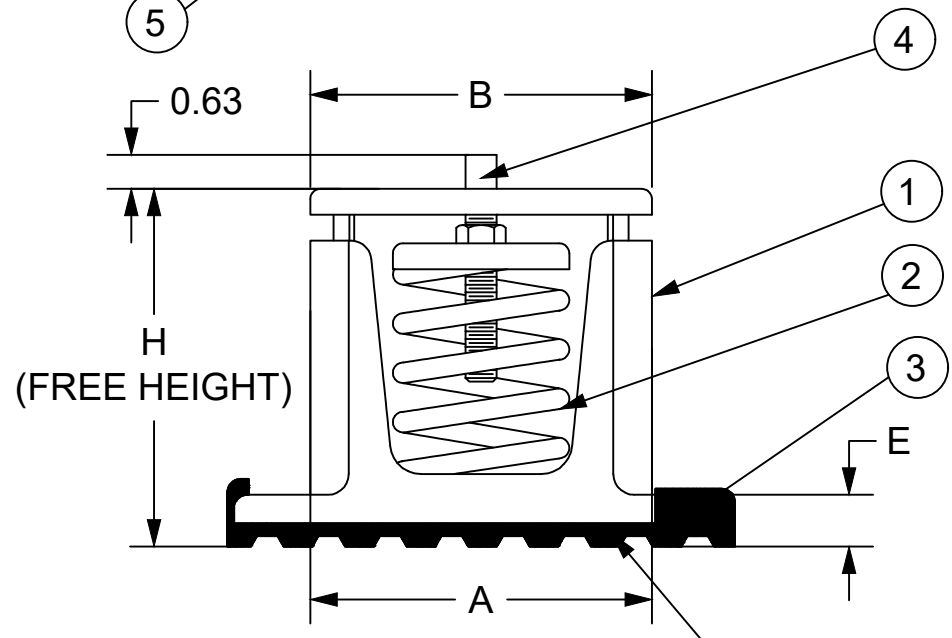
X10350041 SHEET 1 OF 1 REV M
ISOLATOR
SPRING TYPE

D



NO.	DESCRIPTION	MATERIAL	FINISH	QTY.
1	OUTER HOUSING	CARBON STEEL Q235B	BLACK POWER-COATED	1
2	SPRING	SPRING STEEL 60SI2MN	POWER-COATED	1
3	NEOPRENE PAD	NEOPRENE OR NATURAL RUBBER		1
4	1/2 DIA POSITIONING PIN	CARBON STEEL Q235B	ZINC PLATING	1
5	ELASTOMERIC SNUBBER			2

C



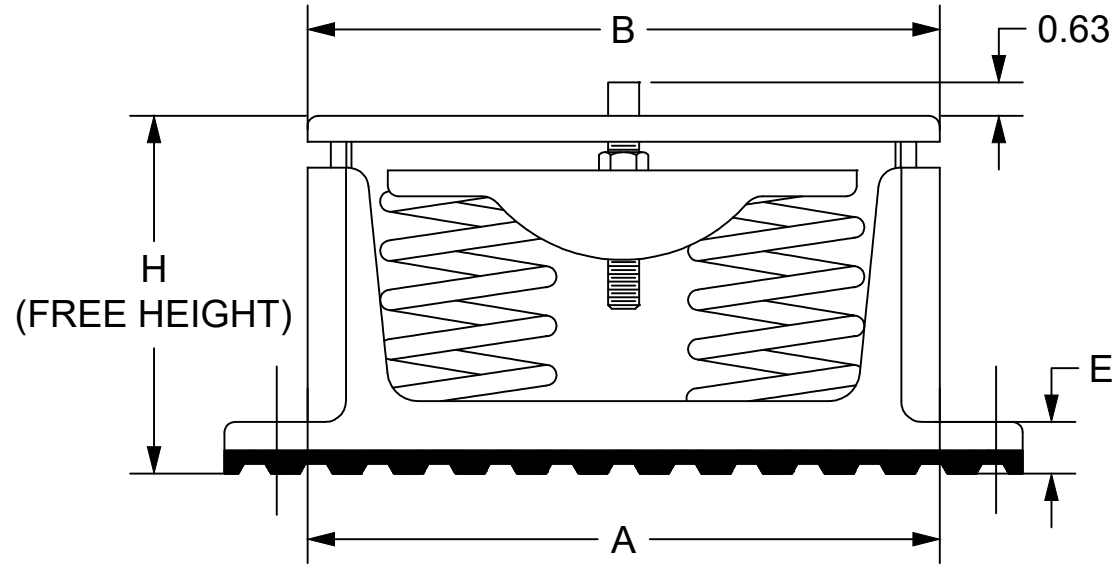
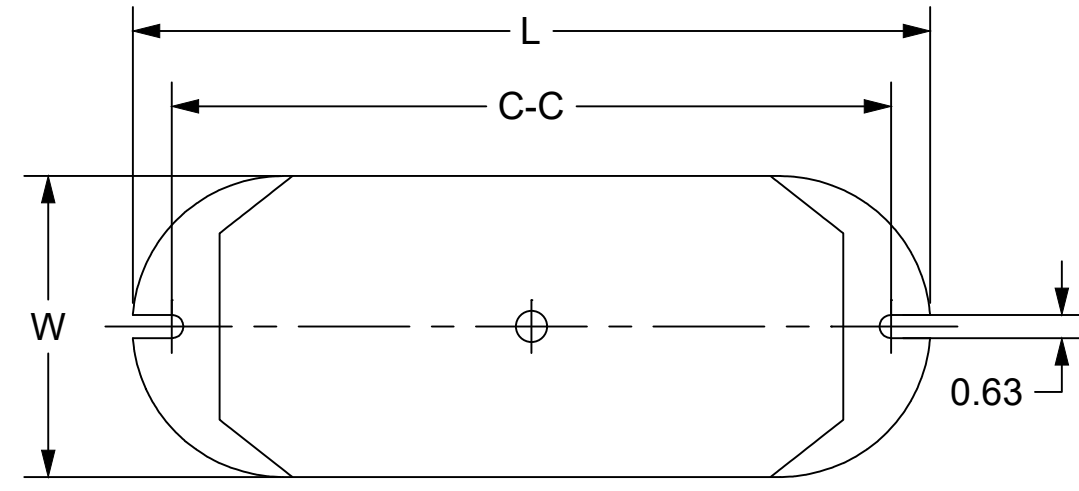
NOTES:
 1. ISOLATORS MUST BE MARKED WITH TRANE CODE NUMBER AND APPROPRIATE EXTENSION.
 2. MAX. LOAD AND DEFLECTION ARE RATED LOADS.
 3. ALL SPRINGS ARE DESIGNED WITH 50% OVER TRAVEL.
 4. SNAP-ON PAD IS .2" PER SIDE LARGER THAN BONDED PAD.
 5. UNLESS OTHERWISE SPECIFIED: ALL DIMENSIONS ARE IN INCHES. DIMENSIONAL TOLERANCE ACCORDING TO ISO 2768CL. WELDING QUALITY AS EN/ISO 5817D.
 6. BREAK AND DEBURR ALL SHARP EDGES

TYPE 1
 SPRING QTY. 1

ACOUSTICAL NONSKID NEOPRENE SNAP-ON OR BANDED PAD

TYPE 2
 SPRING QTY. 2

B



TYPE 3
 SPRING QTY. 4

EXT	TYPE NO.	MAX LOAD (LBS)	DEFLECTION (IN)	SPRING COLOR CODE	DIMENSION (IN)						
					L	W	H	A	B	C-C	E
01	1	85	1.36	PURPLE	7.35~7.75	2.80~3.00	5.63	4.50~4.75	4.50~4.75	6.50	0.47~0.50
02	1	120	1.20	YELLOW							
03	1	175	1.17	BLUE							
04	1	250	1.40	YELLOW							
05	1	340	1.13	RED							
06	1	510	1.02	BLACK							
07	1	675	1.32	PURPLE							
08	1	750	1.06	ORANGE							
09	1	900	1.02	GREEN							
10	1	1200	0.90	GRAY	10.00~10.50	6.25	7.40~7.75	7.40~7.75	9.25	0.53~0.56	
11	1	1360	0.77	WHITE							
12	2	1020	1.02	BLACK							
13	2	1350	1.32	PURPLE							
14	2	1500	1.06	ORANGE							
15	2	1800	1.02	GREEN							
16	2	2400	0.90	GRAY							
17	2	2720	0.77	WHITE							
18	3	2040	1.02	BLACK	9.75~10.25	4.75~5.00	7.15~7.50	7.15~7.50	9.25	0.60~0.63	
19	3	2700	1.32	PURPLE							
20	3	3000	1.06	ORANGE							
21	3	3600	1.02	GREEN							
22	3	4800	0.90	GRAY							
23	3	5440	0.77	WHITE							
24	3	6000	0.70	GOLD							

A

4

3

2

1