

- NOTES:
1. UNLESS OTHERWISE NOTED. ALL SWITCHES ARE SHOWN AT 25° C (77° F), WITH ALL UTILITIES TURNED OFF, AND AFTER A NORMAL SHUTDOWN HAS OCCURRED.

2. DASHED LINES INDICATE RECOMMENDED FIELD WIRING BY OTHERS. DASHED LINED ENCLOSURES AND/OR DASHED DEVICE OUTLINES INDICATE COMPONENTS PROVIDED BY THE FIELD. PHANTOM LINE ENCLOSURES INDICATE ALTERNATE CIRCUITRY OR AVAILABLE SALES OPTIONS. SOLID LINES INDICATE WIRING BY TRANE.

3. NUMBERS ALONG THE LEFT SIDE OF THE SCHEMATIC DESIGNATE THE LOCATION OF COMPONENTS BY LINE NUMBER.

4. ALL FIELD WIRING MUST BE IN ACCORDANCE WITH THE NATIONAL ELECTRIC CODE (NEC). STATE AND LOCAL REQUIREMENTS. ALL FIELD WIRING MUST HAVE AN INSULATION VOLTAGE RATING THAT EQUALS OR EXCEEDS UNIT RATED VOLTAGE.
- 7

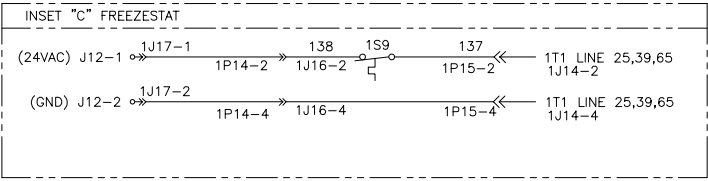
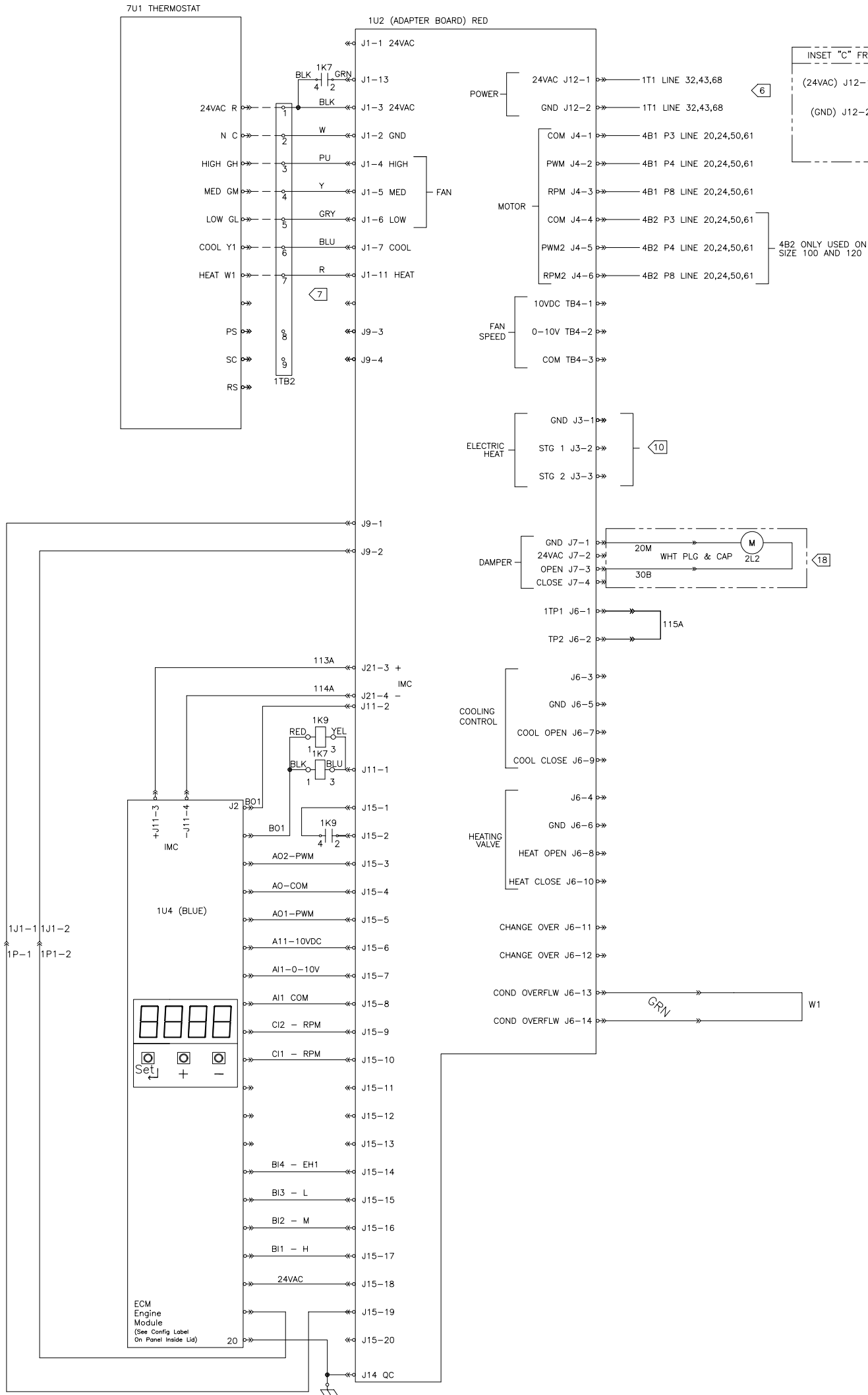
USE CLASS 2 WIRING.
- 10

ELECTRIC HEAT WIRING SHOWN ON SHEETS 23114699 THRU 23114714, SINGLE STAGE.
- 16

FIELD SUPPLIED ACTUATOR WIRING UTILIZES THE SAME CONNECTION POINTS AS FACTORY ACTUATOR WIRING.
- 6
- WIRING SHOWN IS FOR UNIT WITHOUT FRZSTAT. FOR UNIT WITH FRZSTAT, SEE INSET C.

| DEVICE PREFIX LOCATION CODE | |
|-----------------------------|-----------------------|
| AREA | LOCATION |
| 1 | CONTROL PANEL |
| 2 | CONTROL END |
| 3 | PIPING END |
| 4 | FAN SECTION |
| 5 | COIL SECTION |
| 6 | CUSTOMER INSTALLED |
| 7 | FIELD SUPPLIED DEVICE |

| LEGEND | | |
|--------------------|----------------------|-------------|
| DEVICE DESIGNATION | DESCRIPTION | LINE NUMBER |
| 7U1 | THERMOSTAT | 99,78 |
| 1U2 | ADAPTER BOARD | 98,78 |
| 1U4 | ENGINE BOARD | 129,78 |
| 2L2 | DAMPER ACTUATOR | 116 |
| 1TB2 | TB FOR MOUNT | 100 |
| 1K7 | DAMPER CONTROL RELAY | 99,124 |
| 1S9 | FREEZESTAT | 100 |
| W1 | OFSW JUMPER | 133 |
| 1K9 | FAN ON RELAY | 123,126 |



| REPLACES | | TRANE | | 3518-7509 | | REV |
|---------------|-------------|--|------|-----------|------|-----|
| REVISION DATE | DESIGNED BY | THESE DRAWINGS ARE THE PROPERTY OF TRANE. NO PART OF THESE DRAWINGS MAY BE REPRODUCED OR TRANSMITTED IN ANY FORM OR BY ANY MEANS, ELECTRONIC OR MECHANICAL, WITHOUT THE WRITTEN PERMISSION OF TRANE. © TRANE | DATE | DATE | DATE | |
| | | | | | | A |