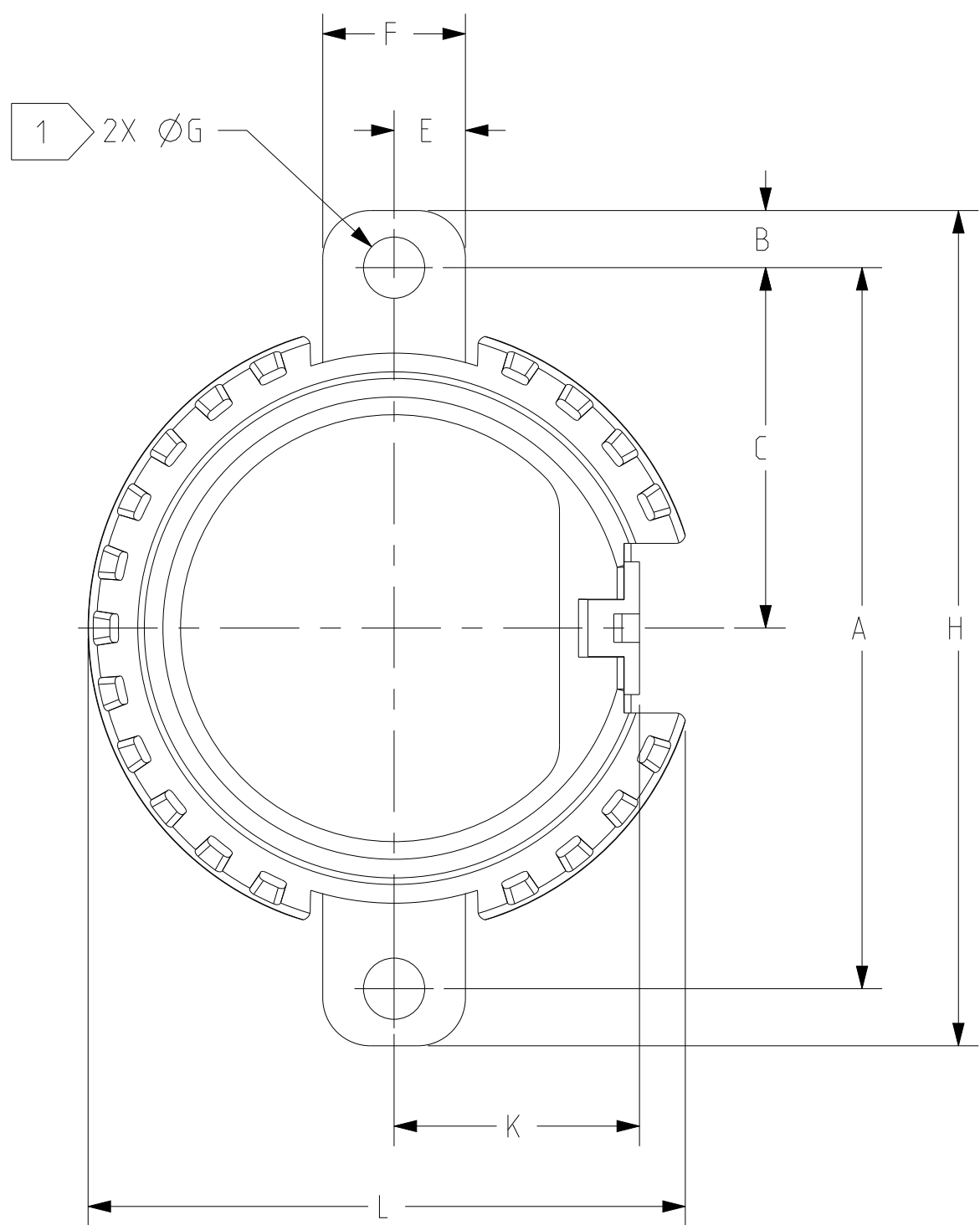


D

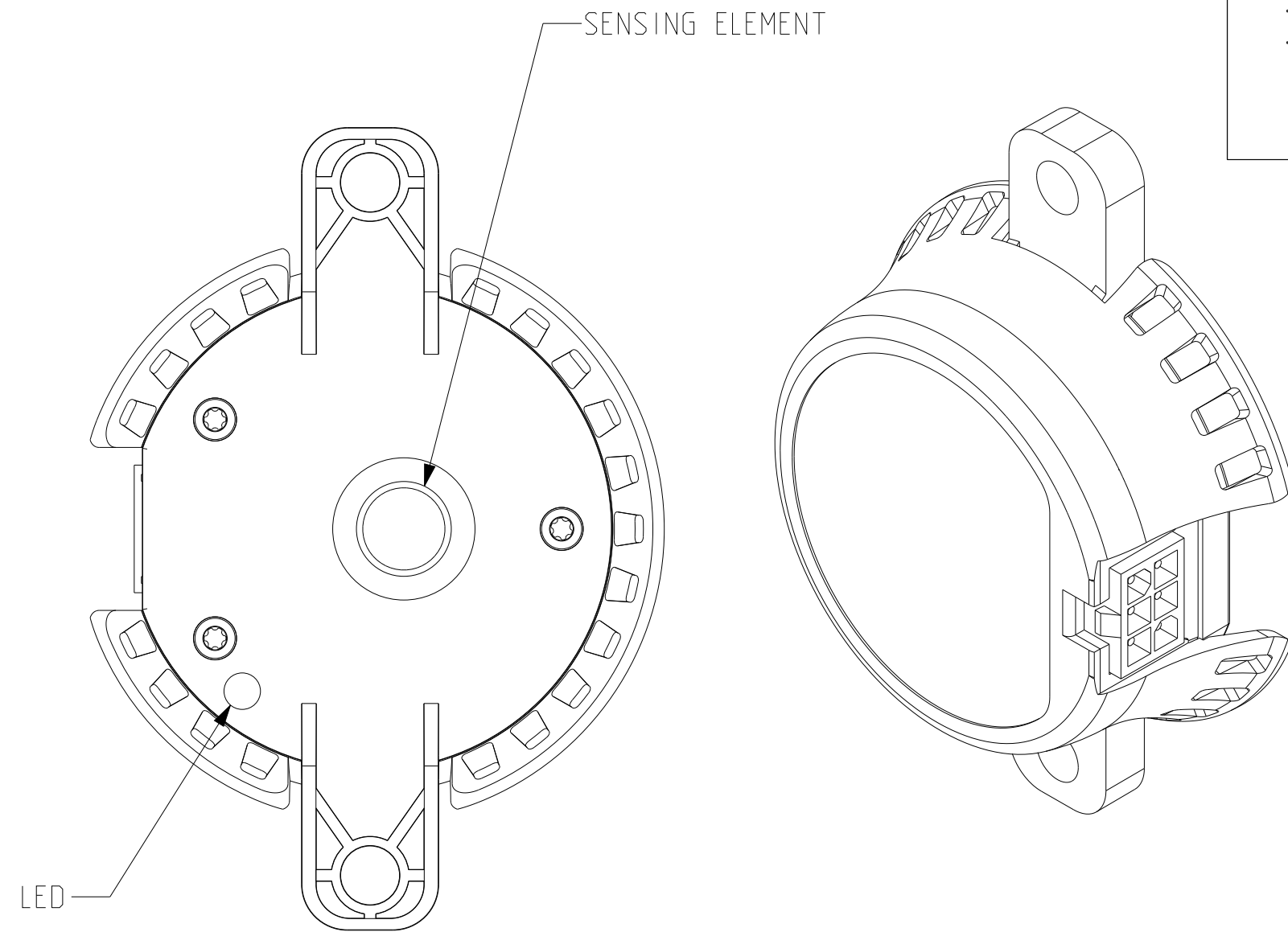
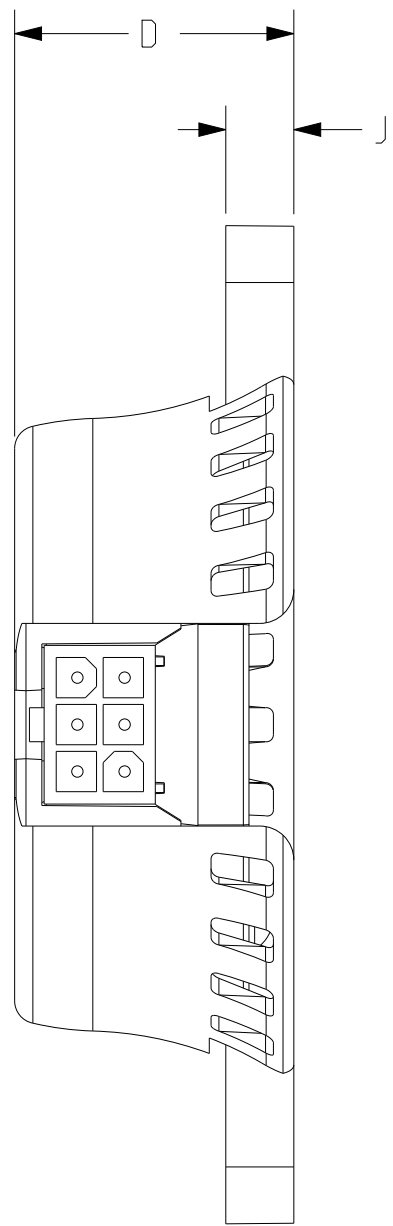
C

B

A



VENDOR 1



LED OUTPUT:
GREEN, SOLID: INITIAL POWER UP / WARM UP DELAY
GREEN, PULSING ("HEARTBEAT"): NORMAL RUNTIME MODE
RED: ALARM / WARNING STATE

	REVISION	VERSION
DRAWING	G	2

UNLESS OTHERWISE SPECIFIED ALL DIMENSIONS ARE IN INCHES. TOLERANCE:
.X =± 0.1
.XX =± 0.03
.XXX =± 0.010
FINISH ✓
ANGLES =± 3.0 °
HOLE DIA = + 0.005
- 0.005
CONFORMS TO ASME Y14.5M-1994.

TRANE

THIS DRAWING IS PROPRIETARY AND SHALL NOT BE COPIED OR ITS CONTENTS DISCLOSED TO OUTSIDE PARTIES WITHOUT THE WRITTEN CONSENT OF TRANE

DRAWN BY: A. MCKEEHAN ©TRANE DATE: 02-APR-2025

DO NOT SCALE PRINT

THIRD ANGLE PROJECTION

X13791022

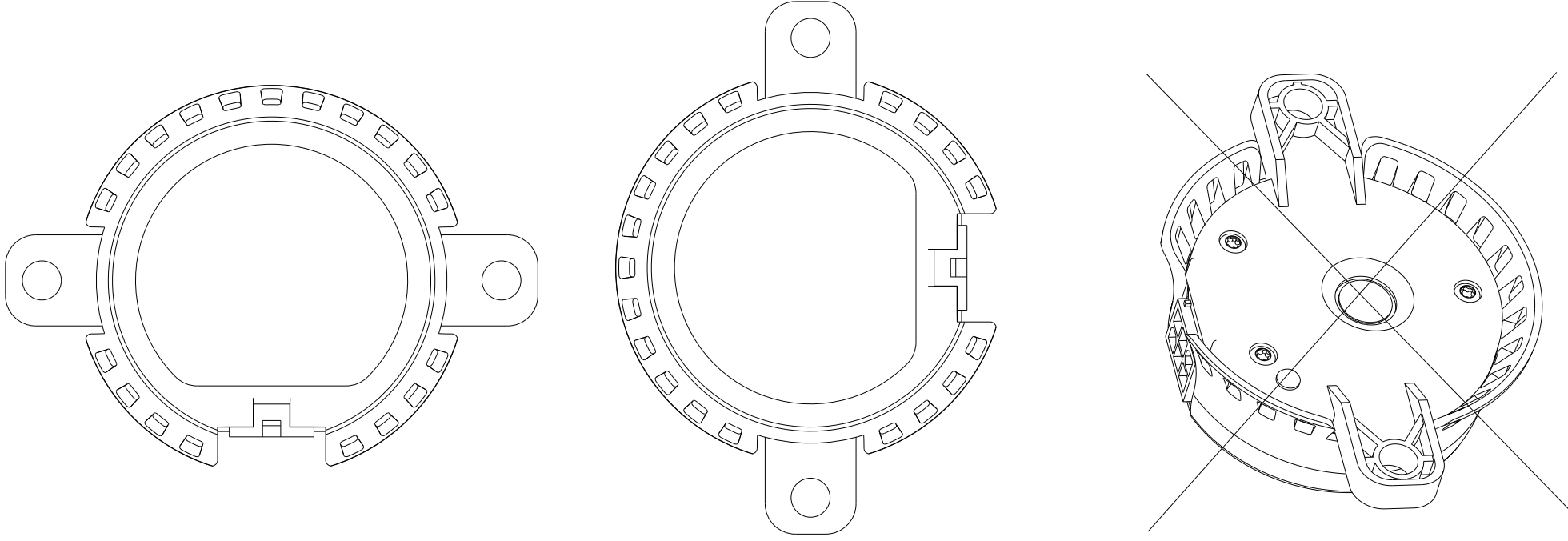
SHEET 1 OF 1

REV G

SENSOR, LEAK DETECTION

	EXT	NAME	DESCRIPTION	DETECTION THRESHOLD LIMIT VALUE
8	X13791022001	SENSOR, LEAK DETECTION	R454B	15%
	X13791022002	SENSOR, LEAK DETECTION	R454B & R32	15%

MOUNT SENSOR WITH CONNECTOR ORIENTED DOWNWARD (PREFERRED), OR TO THE SIDE (ALTERNATE). APPLY DRIP LOOP TO ASSOCIATED WIRE HARNESS TO MINIMIZE POTENTIAL FOR WATER INGRESS. DO NOT MOUNT SENSOR WITH CONNECTOR ORIENTED UPWARD.



DO NOT MOUNT
SENSOR WITH THE LED
AND SENSING ELEMENT
FACING UPWARD.

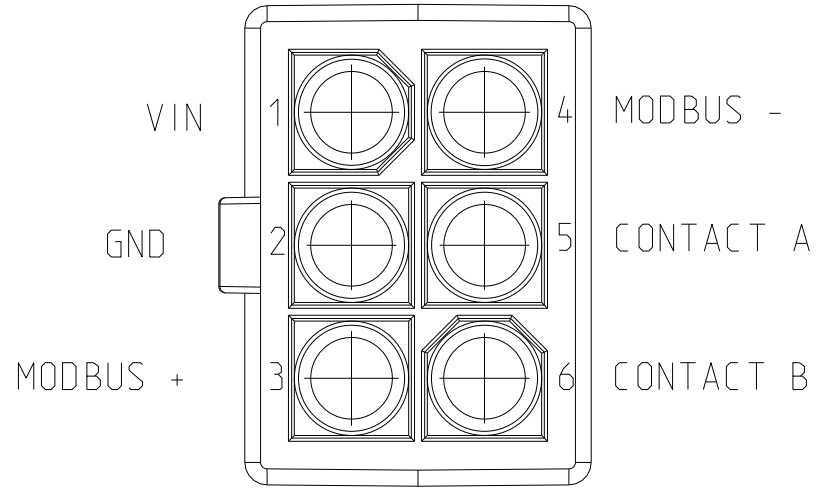
NOTES:

1. MOUNTING: #10 OR #12 SCREW, MAXIMUM TORQUE: 24 IN-LBS
2. CONNECTOR:

INTEGRATED INTO SENSOR HOUSING		QTY
CAP HOUSING	1-770969-0 (WIRE-TO-PCB, RIGHT ANGLE) OR 1-770875-0 (WIRE-TO-PCB, VERTICAL)	1
MATING CONNECTOR		QTY
PLUG HOUSING (WIRE-TO-WIRE)	794895-1	1
6-POSITION INTERFACE SEAL	794772-6	1
WIRE SEAL	794758-1 (INDIVIDUAL)	4
CAVITY PLUG	794995-1	2
CONN CRIMP RECEPTACLE	770904-1 (22 TO 18 AWG, INDIVIDUAL SEAL)	4

3. COMMERCIAL MODBUS; 24V; WITH DRY CONTACTS (COMBO SENSOR)
PINOUT:

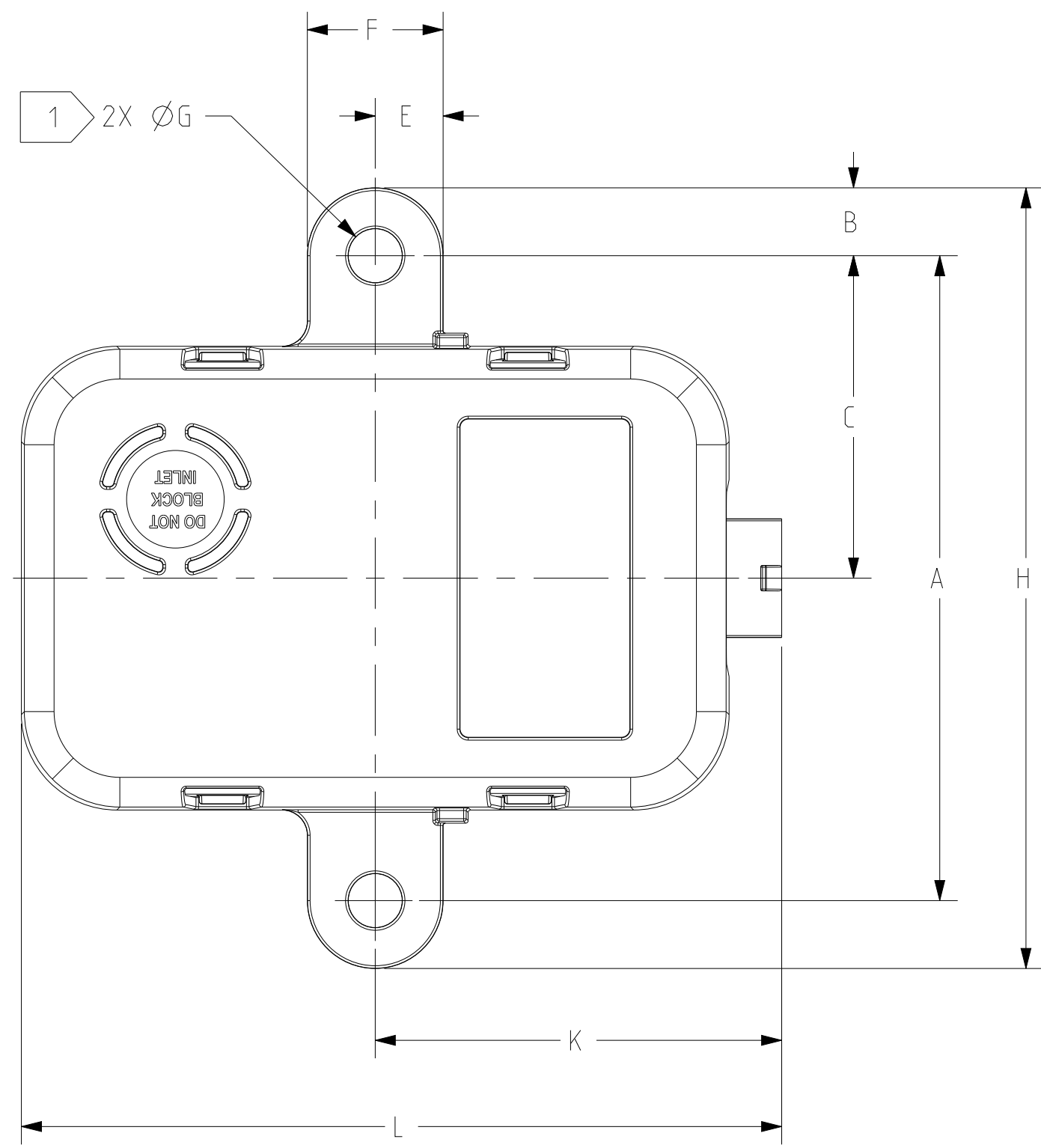
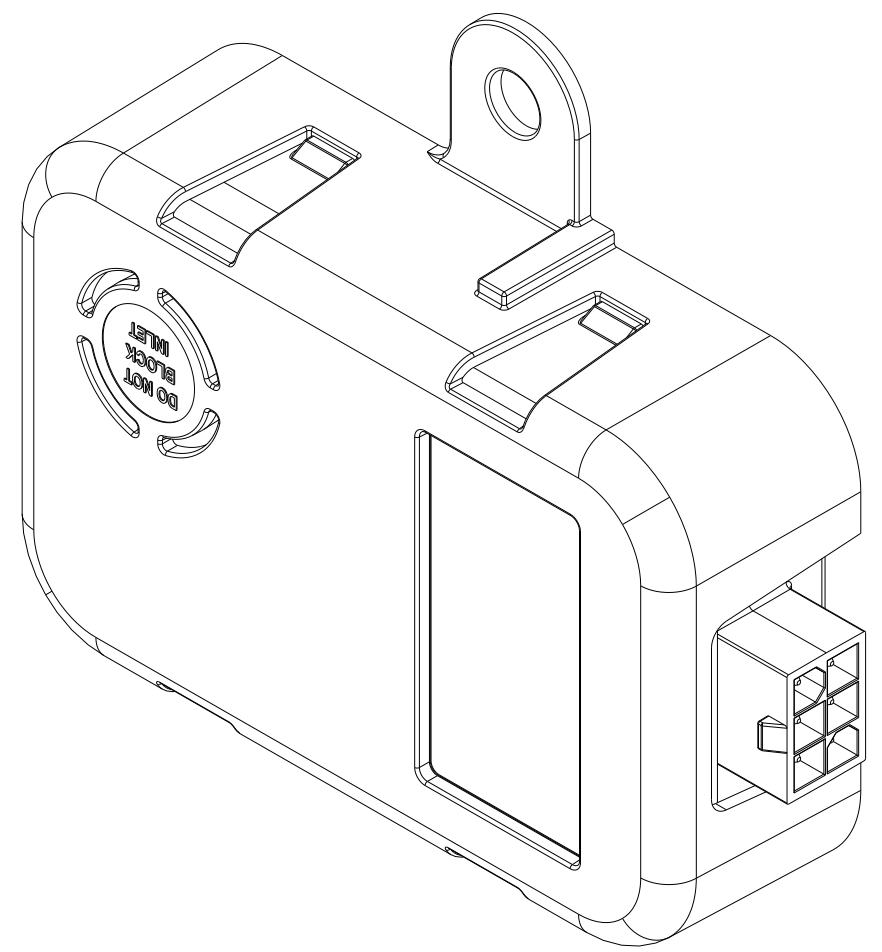
PIN	FUNCTION
1	INPUT VOLTAGE
2	GND
3	MODBUS +
4	MODBUS -
5	CONTACT A
6	CONTACT B



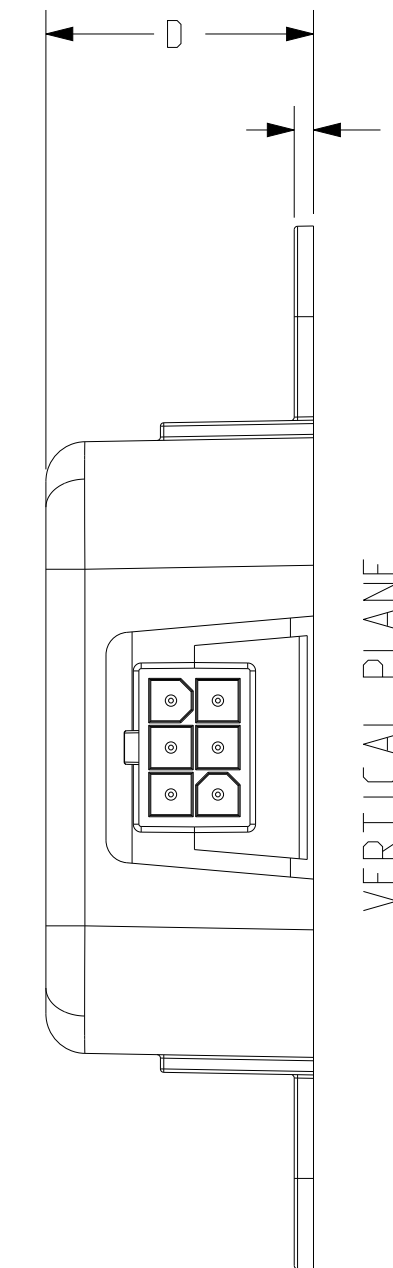
(VIEW SHOWN FROM MATING HARNESS SIDE)

4. CONTACTS TO REMAIN OPEN WHEN DEVICE IS UN-POWERED OR HAS FAILED, END-OF-LIFE, OUT OF CALIBRATION. CONTACTS SHALL REMAIN CLOSED WHEN DEVICE IS POWERED AND NO LEAK IS DETECTED. CONTACTS SHALL OPEN WHEN POWERED AND LEAK IS DETECTED. ONCE THE LEAK DETECTION HAS RESET, THE CONTACTS SHALL REMAIN OPEN FOR A MINIMUM OF 5 MIN. IF THE LEAK DETECTION HAS CLEARED AND THE 5 MIN PERIOD HAS LAPSED, THE CONTACTS SHALL RETURN TO THE CLOSED STATE.
5. LEAK DETECTION SENSOR SHOULD COMMUNICATE VIA MODBUS AND DRY CONTACTS AND MEET THE ATTACHED TRANE ENGINEERING SPECIFICATION(S).
6. MAX POWER CONSUMPTION, VENDOR 1: 1.7 VA
MAX POWER CONSUMPTION, VENDOR 2: 2.7 VA
7. CONTACT MINIMUM-CURRENT RATING, VENDOR 1: 10mA
CONTACT MINIMUM-CURRENT RATING, VENDOR 2: 12mA

8. EXTENSION 0002 SHALL BE MARKED WITH A "D".



VENDOR 2



HORIZONTAL PLANE

MOUNT SENSOR ALONG A VERTICAL PLANE, WITH CONNECTOR ORIENTED DOWNWARD (PREFERRED), OR TO THE SIDE (ALTERNATE). APPLY DRIP LOOP TO ASSOCIATED WIRE HARNESS TO MINIMIZE POTENTIAL FOR WATER INGRESS. DO NOT MOUNT SENSOR WITH CONNECTOR ORIENTED UPWARD.

VENDOR	DIMENSION IN INCHES										
	A	B	C	D	E	F	G	H	J	K	L
1	2.99	.24	1.50	.97	.30	.59	.25	3.47	.24	1.02	2.48
2		.31		.93	.31	.63		3.62	.07	1.89	3.52