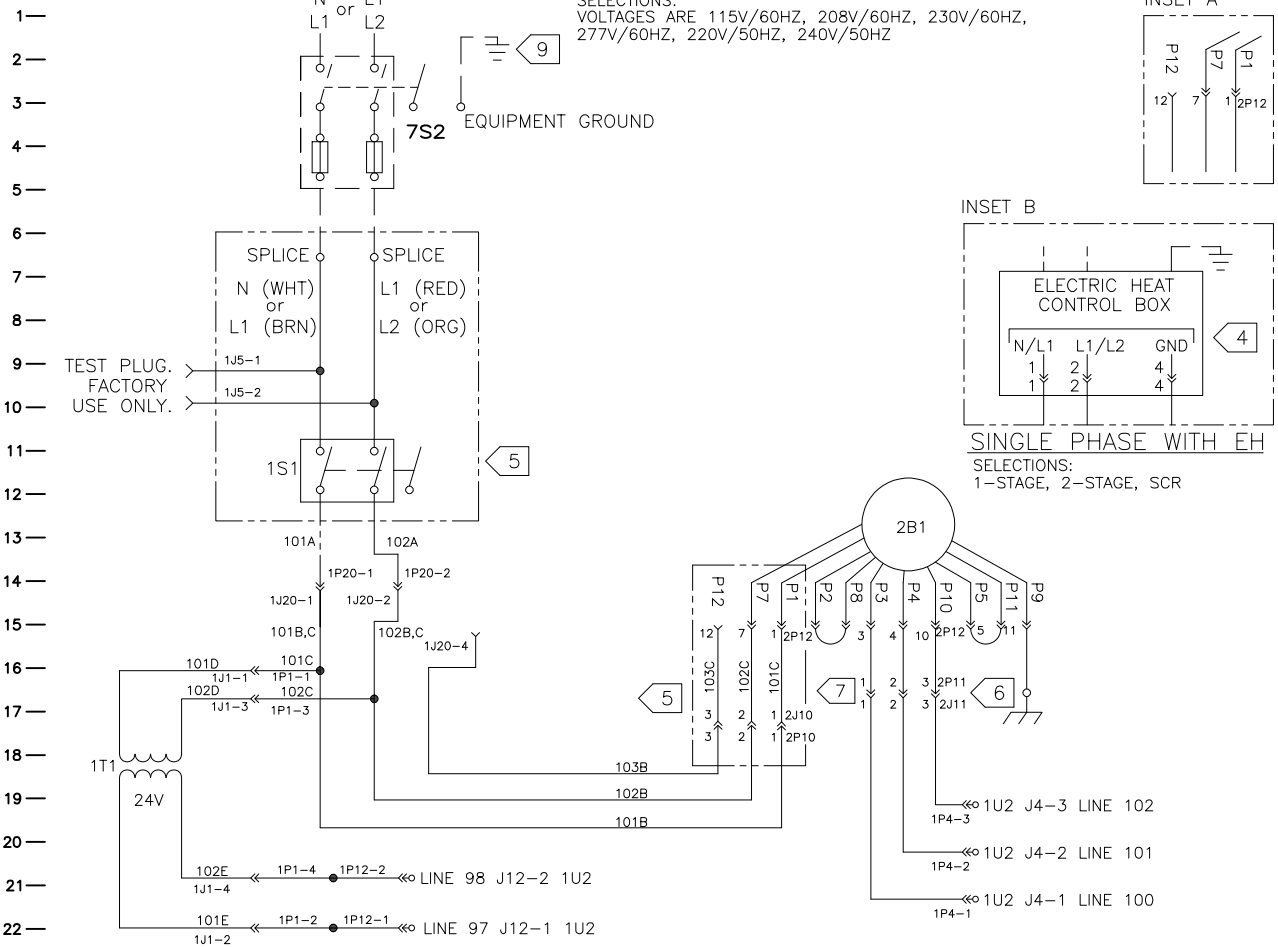


SEE NAMEPLATE FOR VOLTAGE

**SINGLE PHASE**

SELECTIONS:  
VOLTAGES ARE 115V/60HZ, 208V/60HZ, 230V/60HZ,  
277V/60HZ, 220V/50HZ, 240V/50HZ



**WARNING**

HAZARDOUS VOLTAGE!  
DISCONNECT ALL ELECTRIC POWER INCLUDING REMOTE DISCONNECTS AND FOLLOW LOCK OUT AND TAG PROCEDURES BEFORE SERVICING. INSURE THAT ALL MOTOR CAPACITORS HAVE DISCHARGED STORED VOLTAGE. UNITS WITH VARIABLE SPEED DRIVE, REFER TO DRIVE INSTRUCTIONS FOR CAPACITOR DISCHARGE.  
FAILURE TO DO THE ABOVE BEFORE SERVICING COULD RESULT IN DEATH OR SERIOUS INJURY.

**AVERTISSEMENT**

TENSION DANGEREUSE!  
COUPER TOUTES LES TENSIONS ET OUVRIR LES SECTIONNEURS A DISTANCE, PUIS SUIVRE LES PROCEDURES DE VERROUILLAGE ET DES ETIQUETTES AVANT TOUTE INTERVENTION. VERIFIER QUE TOUS LES CONDENSATEURS DES MOTEURS SONT DECHARGES. DANS LE CAS D'UNITES COMPORTANT DES ENTRAÎNEMENTS A VITESSE VARIABLE, SE REPORTER AUX INSTRUCTIONS DE L'ENTRAÎNEMENT POUR DECHARGER LES CONDENSATEURS.

**ADVERTENCIA**

¡VOLTAJE PELIGROSO!  
DESCONECTE TODA LA ENERGÍA ELÉCTRICA, INCLUIDO LAS DESCONEXIONES REMOTAS Y SIGA LOS PROCEDIMIENTOS DE CIERRE Y ETIQUETADO ANTES DE PROCEDER AL SERVICIO. ASEGÚRESE DE QUE TODOS LOS CAPACITORES DEL MOTOR HAYAN DESCARGADO EL VOLTAJE ALMACENADO. PARA LAS UNIDADES CON EJE DE DIRECCIÓN DE VELOCIDAD VARIABLE, CONSULTE LAS INSTRUCCIONES PARA LA DESCARGA DEL CONDENSADOR.  
EL NO REALIZAR LO ANTERIORMENTE INDICADO, PODRÍA OCASIONAR LA MUERTE O SERIAS LESIONES PERSONALES.

**NOTICE**

USE COPPER CONDUCTORS ONLY!  
UNIT TERMINALS ARE NOT DESIGNED TO ACCEPT OTHER TYPES OF CONDUCTORS.  
FAILURE TO DO THE ABOVE COULD RESULT IN EQUIPMENT DAMAGE.

**AVIS**

N'UTILISER QUE DES CONDUCTEURS EN CUIVRE!  
LES BORNES DE L'UNITÉ NE SONT PAS CONÇUES POUR RECEVOIR D'AUTRES TYPES DE CONDUCTEURS.  
FAIRE DÉFAUT À LA PROCÉDURE CI-DESSUS PEUT ENTRAÎNER DES DOMMAGES À L'ÉQUIPEMENT.

**AVISO**

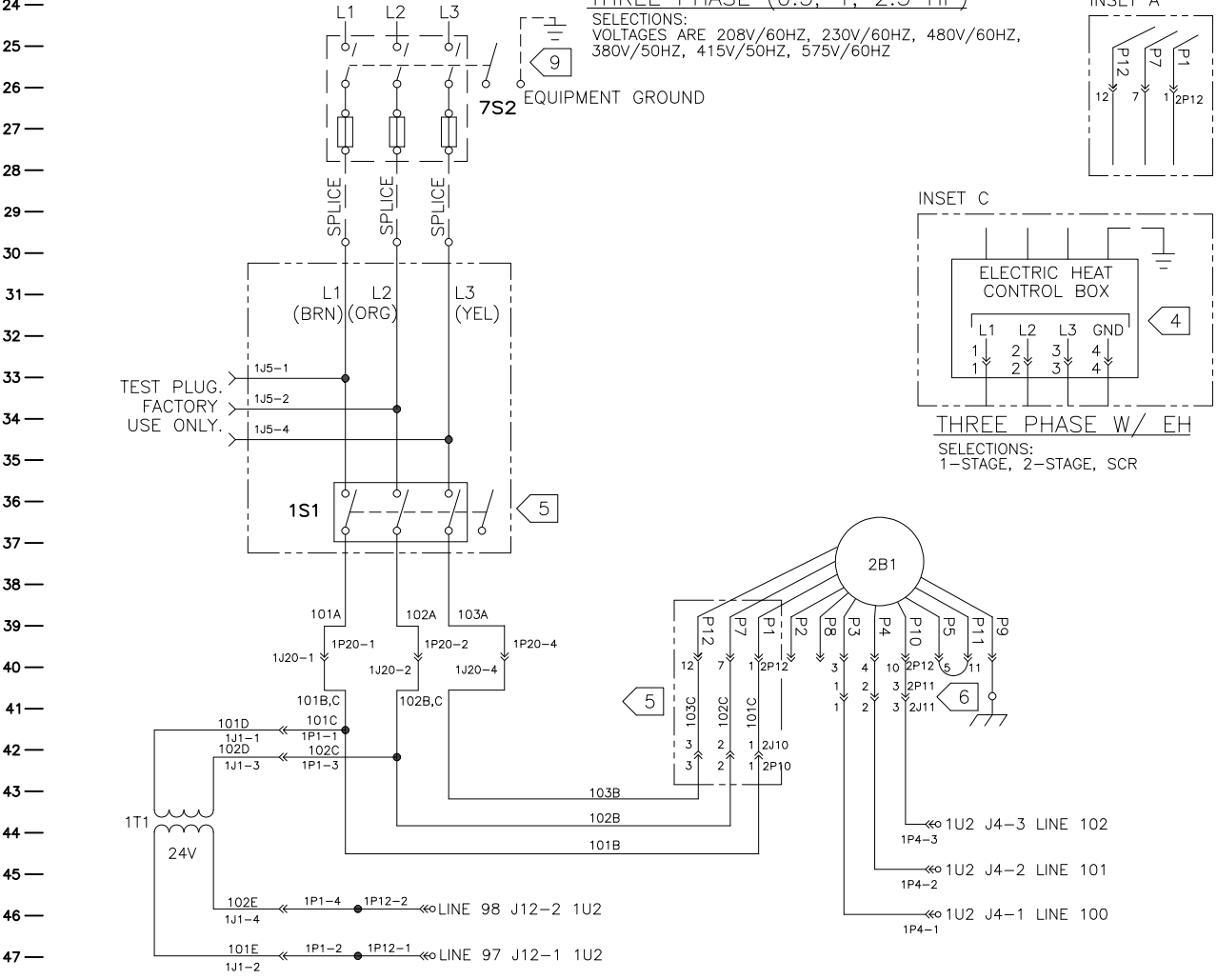
¡UTILICE ÚNICAMENTE CONDUCTORES DE COBRE!  
LAS TERMINALES DE LA UNIDAD NO ESTÁN DISEÑADAS PARA ACEPTAR OTROS TIPOS DE CONDUCTORES.  
NO SEGUIR LAS INSTRUCCIONES ANTERIORES PUEDE PROVOCAR DAÑOS EN EL EQUIPO.

| LEGEND                              |                          |             |
|-------------------------------------|--------------------------|-------------|
| DEVICE DESIGNATION                  | DESCRIPTION              | LINE NUMBER |
| SINGLE PHASE                        |                          |             |
| 7S2                                 | FUSED DISCONNECT SWITCH  | 3           |
| 1S1                                 | MANUAL DISCONNECT SWITCH | 12          |
| 1T1                                 | TRANSFORMER              | 20          |
| 2B1                                 | FAN MOTOR                | 14          |
| THREE PHASE (0.5, 1, 2.3 HP)        |                          |             |
| 7S2                                 | FUSED DISCONNECT SWITCH  | 27          |
| 1S1                                 | MANUAL DISCONNECT SWITCH | 37          |
| 1T1                                 | TRANSFORMER              | 44          |
| 2B1                                 | FAN MOTOR                | 48          |
| THREE PHASE (1.5, 3.0, 3.5, 5.0 HP) |                          |             |
| 7S2                                 | FUSED DISCONNECT SWITCH  | 54          |
| 1S1                                 | MANUAL DISCONNECT SWITCH | 63          |
| 1T1                                 | TRANSFORMER              | 70          |
| 2B1                                 | FAN MOTOR                | 58          |
| 2U1                                 | MOTOR DRIVER             | 67          |
| 2S2                                 | FREEZE STAT              | 29          |

SEE NAMEPLATE FOR VOLTAGE

**THREE PHASE (0.5, 1, 2.3 HP)**

SELECTIONS:  
VOLTAGES ARE 208V/60HZ, 230V/60HZ, 480V/60HZ,  
380V/50HZ, 415V/50HZ, 575V/60HZ



**NOTES:**

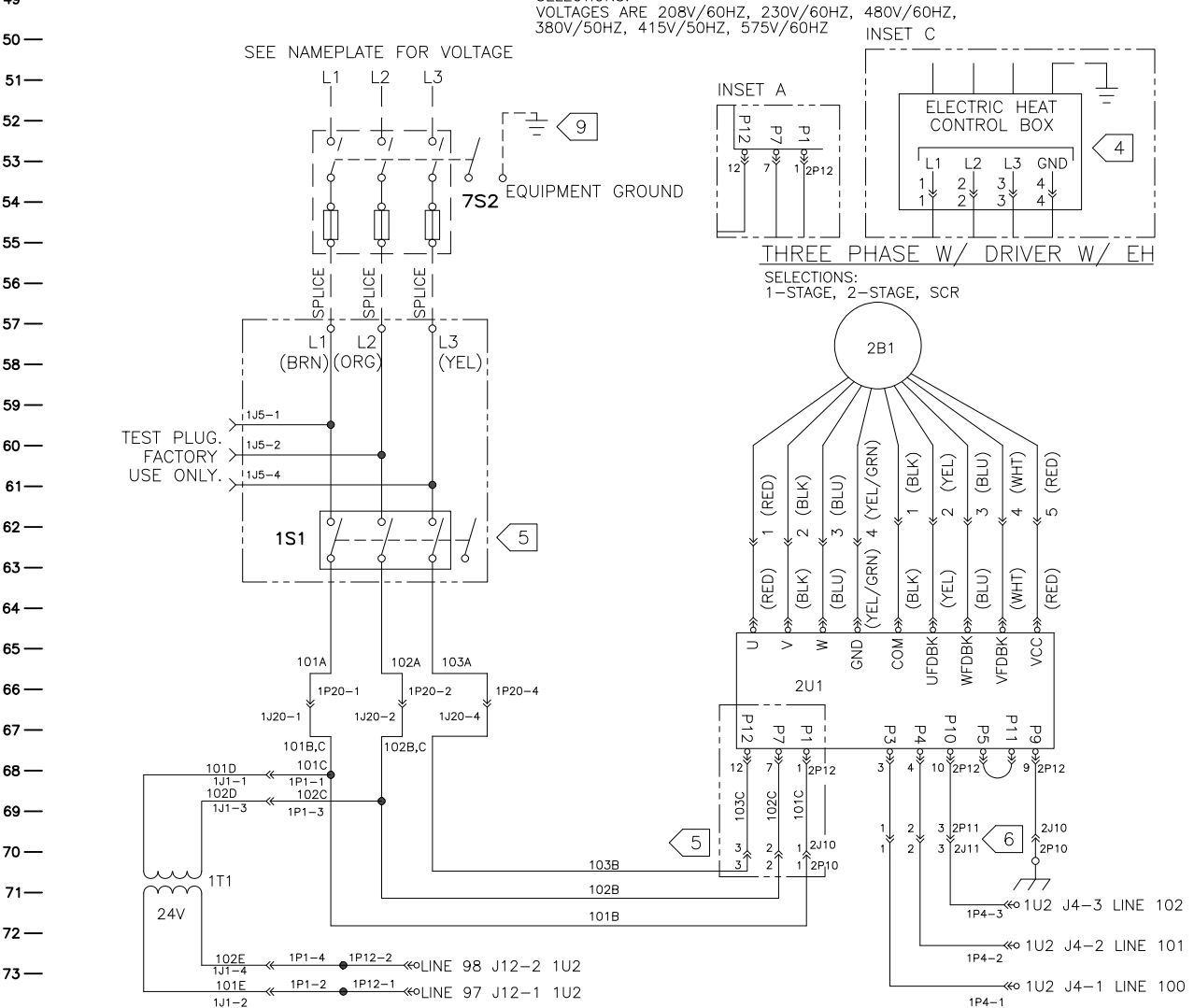
- UNLESS OTHERWISE NOTED, ALL SWITCHES ARE SHOWN AT 25° C (77° F), AT ATMOSPHERIC PRESSURE, AT 50% RELATIVE HUMIDITY, WITH ALL UTILITIES TURNED OFF, AND AFTER A NORMAL SHUTDOWN HAS OCCURRED.
- DASHED LINES INDICATE RECOMMENDED FIELD WIRING BY OTHERS. DASHED LINE ENCLOSURES AND/OR DASHED DEVICE OUTLINES INDICATE COMPONENTS PROVIDED BY THE FIELD. PHANTOM LINED ENCLOSURES INDICATE ALTERNATE CIRCUITRY OR AVAILABLE SALES OPTIONS. SOLID LINES INDICATE WIRING BY TRANE CO.
- ALL FIELD WIRING MUST BE IN ACCORDANCE WITH THE NATIONAL ELECTRIC CODE (NEC), STATE AND LOCAL REQUIREMENTS.
- ELECTRIC HEAT SCHEMATIC IS LOCATED IN THE ELECTRIC HEAT CONTROL BOX PANEL.
- WIRING SHOWN IS FOR NO ELECTRIC HEAT. FOR ELECTRIC HEAT FOR SINGLE PHASE SEE INSET A&B. FOR ELECTRIC HEAT THREE PHASE SEE INSET A&C.
- CW JUMPER IS PRESENT FROM PIN P5 TO P11 ON UNITS WITH CW MOTOR ROTATION AS VIEWED FROM SHAFT END.
- MOTOR VOLTAGE CONFIGURATION P2-P8 JUMPERED FOR 115V OPERATION ONLY.
- USE COPPER CONDUCTORS ONLY.
- ATTACH EQUIPMENT GROUND.

| AREA | LOCATION                    |
|------|-----------------------------|
| 1    | MAIN CONTROL PANEL          |
| 2    | SUPPLY FAN AND COIL SECTION |
| 3    |                             |
| 4    | MIXING BOX                  |
| 5    | EXTERNAL PIPING             |
| 6    | ELECTRIC HEAT CONTROL BOX   |
| 7    | FIELD INSTALLED DEVICE      |

SEE NAMEPLATE FOR VOLTAGE

**THREE PHASE W/ DRIVER (1.5, 3.0, 3.5, 5.0 HP)**

SELECTIONS:  
VOLTAGES ARE 208V/60HZ, 230V/60HZ, 480V/60HZ,  
380V/50HZ, 415V/50HZ, 575V/60HZ



| REV | DATE        | DESCRIPTION   |
|-----|-------------|---------------|
| 1   | 14-OCT-2025 | REVISION DATE |
| 1   | C. ZHANG    | DRAWN BY      |
| 1   |             | CHECKED BY    |
| 1   |             | DESIGNED BY   |
| 1   |             | DATE          |

| REV | DATE        | DESCRIPTION   |
|-----|-------------|---------------|
| 1   | 14-OCT-2025 | REVISION DATE |
| 1   | C. ZHANG    | DRAWN BY      |
| 1   |             | CHECKED BY    |
| 1   |             | DESIGNED BY   |
| 1   |             | DATE          |

| REV | DATE        | DESCRIPTION   |
|-----|-------------|---------------|
| 1   | 14-OCT-2025 | REVISION DATE |
| 1   | C. ZHANG    | DRAWN BY      |
| 1   |             | CHECKED BY    |
| 1   |             | DESIGNED BY   |
| 1   |             | DATE          |

| REV | DATE        | DESCRIPTION   |
|-----|-------------|---------------|
| 1   | 14-OCT-2025 | REVISION DATE |
| 1   | C. ZHANG    | DRAWN BY      |
| 1   |             | CHECKED BY    |
| 1   |             | DESIGNED BY   |
| 1   |             | DATE          |

50262929  
SCHEMATIC  
BLOWER COIL - BOXE